

R1HLA R0Ad

Brintons

SELF EXPRESSION
SUMMER 2024

 QuickWeave™

RIHLA ROAD

Rihla Road tells a unique story, echoing the essence of ancient cities, bustling souks, and majestic landscapes. The designs are entangled with the allure of Morocco's famed craftsmanship, with motifs that reflect the beauty of traditional tapestries.

The designs from this collection are now part of our QuickWeave program. Perfectly suited for fast-paced projects, QuickWeave allows clients to recolor existing designs with any of our six palettes: Inception, Odyssey, Sequence, Unity, Naturals, and Revive.

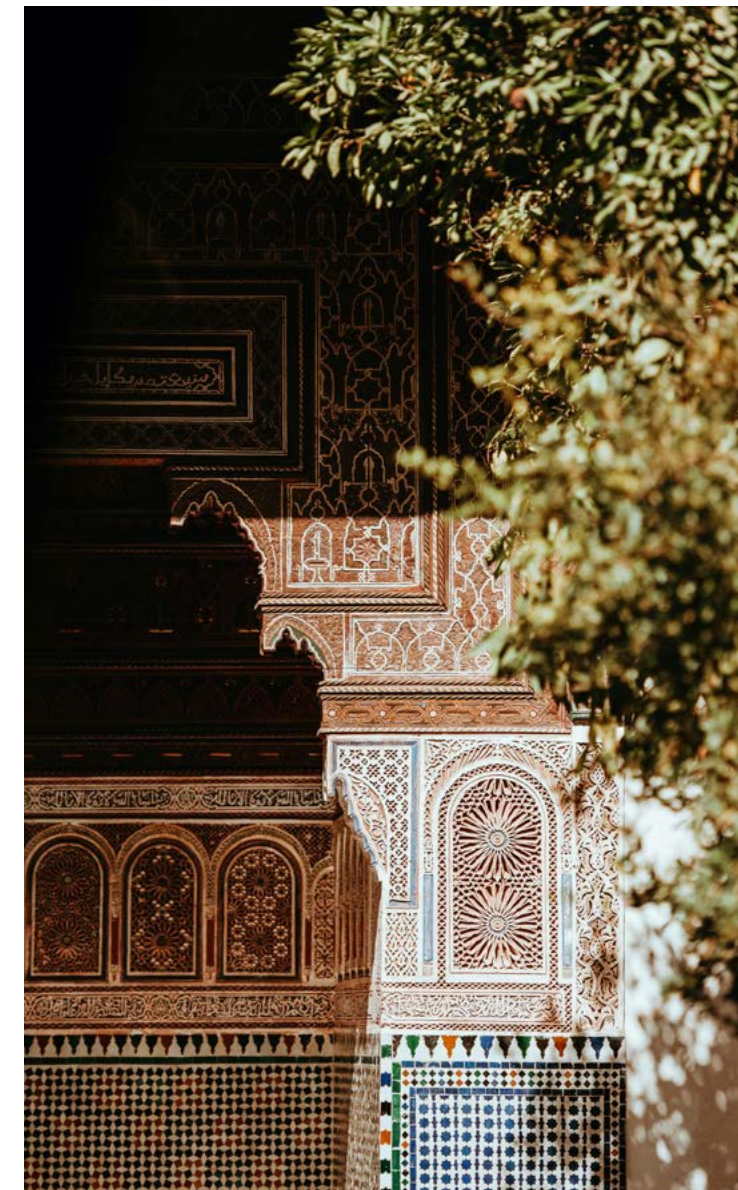
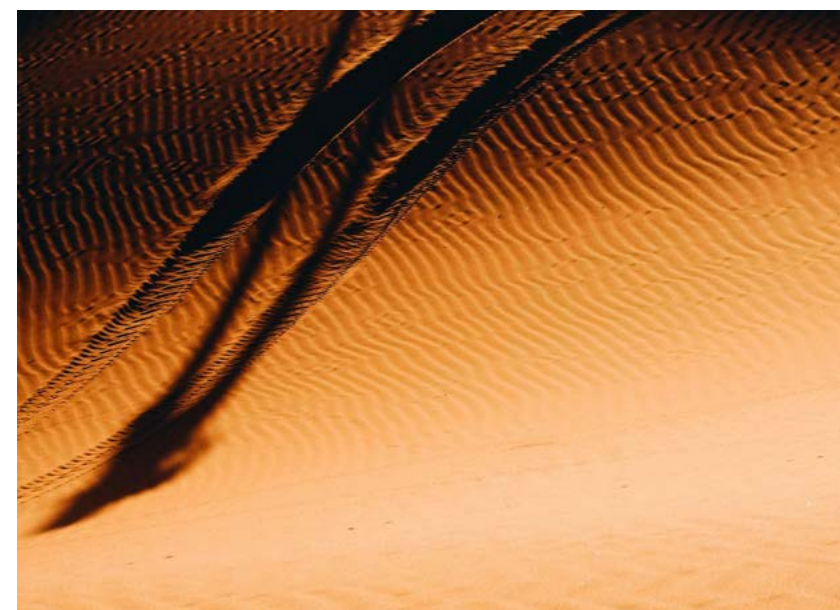
Inception, Odyssey, Sequence, Unity and Revive are woven using our 80% wool, 20% nylon wool-rich yarn blend and are suitable for heavy commercial use.

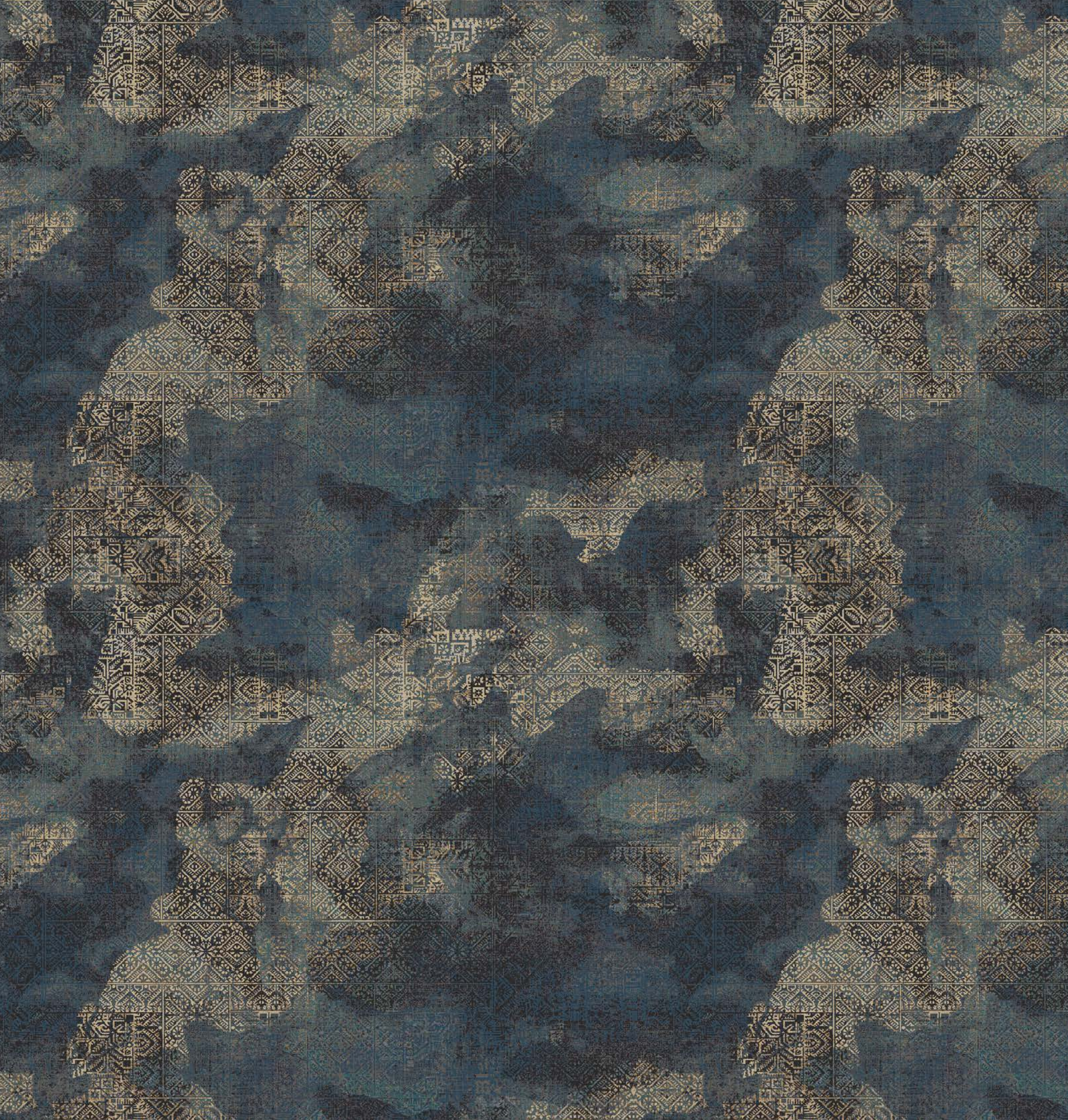
The Naturals palette offers undyed 100% wool which is an ideal choice for guest rooms.

Join in the self-expression at Brintons Design Studio Online dso.brintons.net

 QuickWeave™

Brintons | SELF EXPRESSION
SUMMER 2024

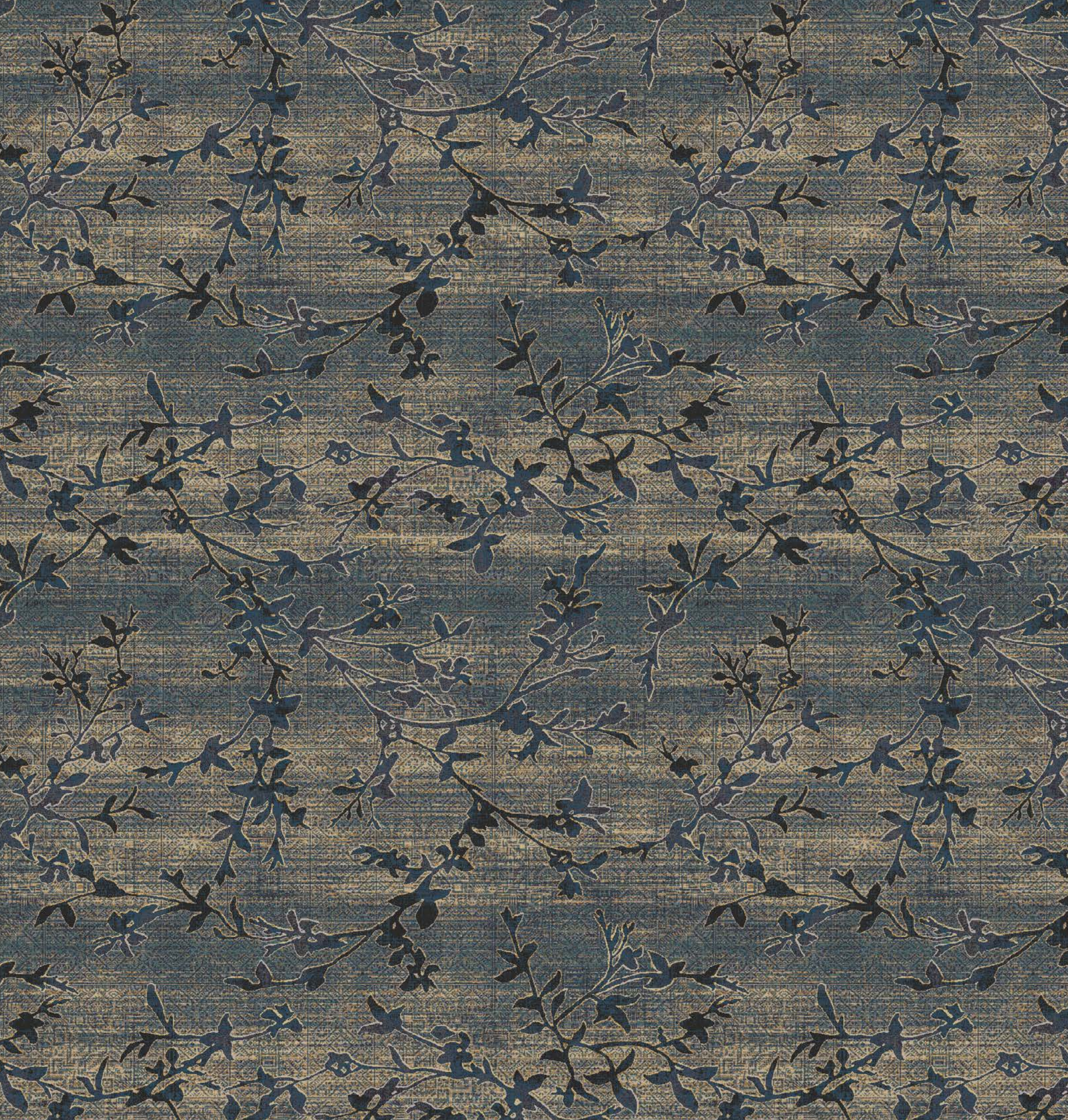




- 1. L7270 
- 2. 23-2830 
- 3. 20-V33 
- 4. 29-3453 
- 5. 40-T7918 
- 6. 23-4154 
- 7. 20-4062 
- 8. 26-1905 
- 9. L7650 
- 10. 22-4001 
- 11. 42-T7291 
- 12. 20-V110 

- 1. L7270
- 2. 23-2830
- 3. 20-V33
- 4. 29-3453
- 5. 40-T7918
- 6. 23-4154
- 7. 20-4062
- 8. 26-1905
- 9. L7650
- 10. 22-4001
- 11. 42-T7291
- 12. 20-V110





- 1. L7270 
- 2. 23-2830 
- 3. 20-V33 
- 4. 29-3453 
- 5. 40-T7918 
- 6. 23-4154 
- 7. 20-4062 
- 8. 26-1905 
- 9. L7650 
- 10. 22-4001 
- 11. 42-T7291 
- 12. 20-V110 

- | | | | |
|-------------|--|--------------|--|
| 1. L7270 | | | |
| | | 7. 20-4062 | |
| 2. 23-2830 | | | |
| | | 8. 26-1905 | |
| 3. 20-V33 | | | |
| | | 9. L7650 | |
| 4. 29-3453 | | | |
| | | 10. 22-4001 | |
| 5. 40-T7918 | | | |
| | | 11. 42-T7291 | |
| 6. 23-4154 | | | |
| | | 12. 20-V110 | |



QuickWeave™

Quickweave™ from Brintons is an innovative approach to carpet design. Select a design, recolor and we'll weave to order.

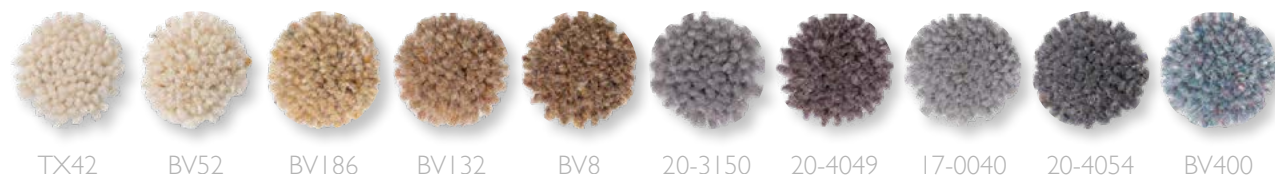
Our palettes have been carefully selected for their versatility and commercial suitability.

Inception, Odyssey and Revive palettes each have 16 colors, Sequence and Unity have 10 colors each, and the Naturals palette offers 8 undyed colors to choose from.

The QuickWeave™ program is not limited to just these designs. There are hundreds of designs available across various styles on our Design Studio Online.

QUICKWEAVE | UNITY

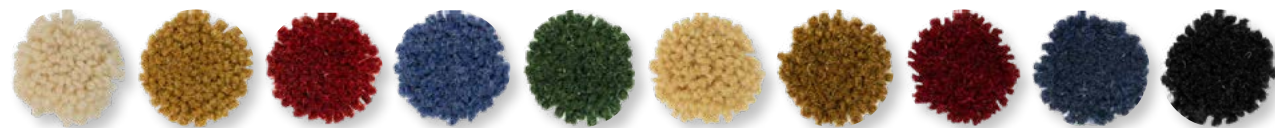
80% wool 20% nylon



TX42 BV52 BV186 BV132 BV8 20-3150 20-4049 17-0040 20-4054 BV400

QUICKWEAVE | SEQUENCE

80% wool 20% nylon



A0002 A1001 A4001 A6001 A5002 A0001 A1002 A4002 A6002 A9001

QUICKWEAVE | NATURALS

100% undyed wool



M0028 M0029 M0030 M0031 M0024 M0025 M0026 M0027

QUICKWEAVE | ODYSSEY

80% wool 20% nylon



42-T7291 22-4001 L7650 40-T7161 40-T7918 40-T8106 40-T7794 L7270



26-1905 26-2935 20-V110 20-4062 20-V33 23-2830 23-4154 29-3453

QUICKWEAVE | INCEPTION

80% wool 20% nylon



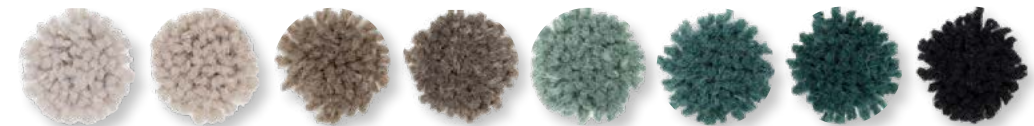
A0461 A0463 A0462 A1351 A8236 A8237 A6465 A6466



A6467 A6468 A5400 A5401 A3159 A3160 A4213 A9078

QUICKWEAVE | REVIVE

80% wool 20% nylon



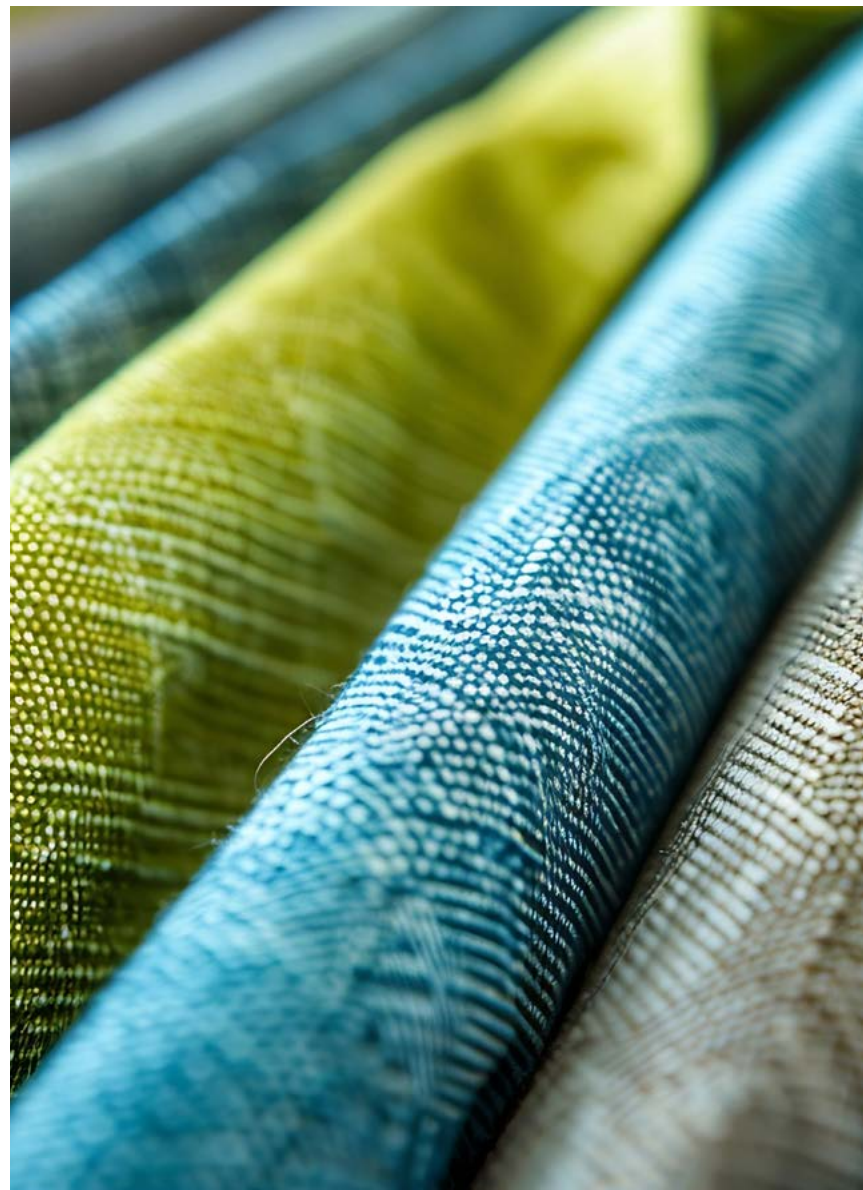
A0828 A0829 A0830 A0831 A5808 A5809 A5810 A9163



A1689 A4332 A4333 A4334 A61194 A61195 A61196 A61197

Visit dso.brintons.net to start your journey today.





RIHLA ROAD

"My grandmother, mother, and aunts are an exceptionally talented group of artists."

My interior designer grandmother traveled extensively, collecting fabrics and art pieces along the way.

One of her favorite destinations was Morocco, with its stunning architecture, inspiring landscapes, and vibrant souks. I loved exploring her collection of fabrics, which likely inspired me to pursue a career in textile design.

The patterns in Rihla Road reflect these travels through ancient cities, dunes, and rugged mountains bordered by lush valleys. They evoke medieval souks filled with spices and textiles and trails through near-deserted mountain towns."



Nicole Bennett
Senior Field Designer

Brintons | SELF EXPRESSION
SUMMER 2024

RHILA ROAD

Brintons | SELF EXPRESSION
SUMMER 2024

QuickWeave™

For more inspiration or to contact your local sales rep, please visit our corporate website.

www.brintons.net

©Brintons Carpets Limited 2024. All copyright, design rights, and intellectual property rights existing in our designs are and will remain the property of Brintons Carpets Limited. Any infringement upon those rights will be pursued vigorously. Colors are reproduced within the limits of the printing process.