



Brintons

USQW
VOL I



USQW VOL I

USQW VOL I is the first in a new series of patterns meticulously selected from our in-house collections and re-engineered for our QuickWeave™ program.

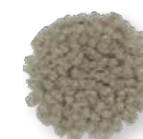
This presentation of designs utilize the Odyssey palette and are customizable with any of the six available QW palettes on our Design Studio Online.

Perfectly suited for fast-paced projects, QuickWeave™ allows clients to recolor production-ready designs for a semi-bespoke solution with a shorter manufacturing lead time.

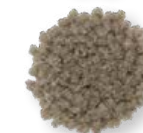




1. 42-T7291



2. 22-4001



3. L7650



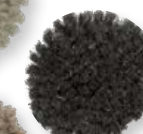
4. 40-T7161



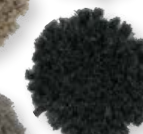
5. 40-T7918



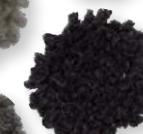
6. 40-T8106



7. 40-T7794

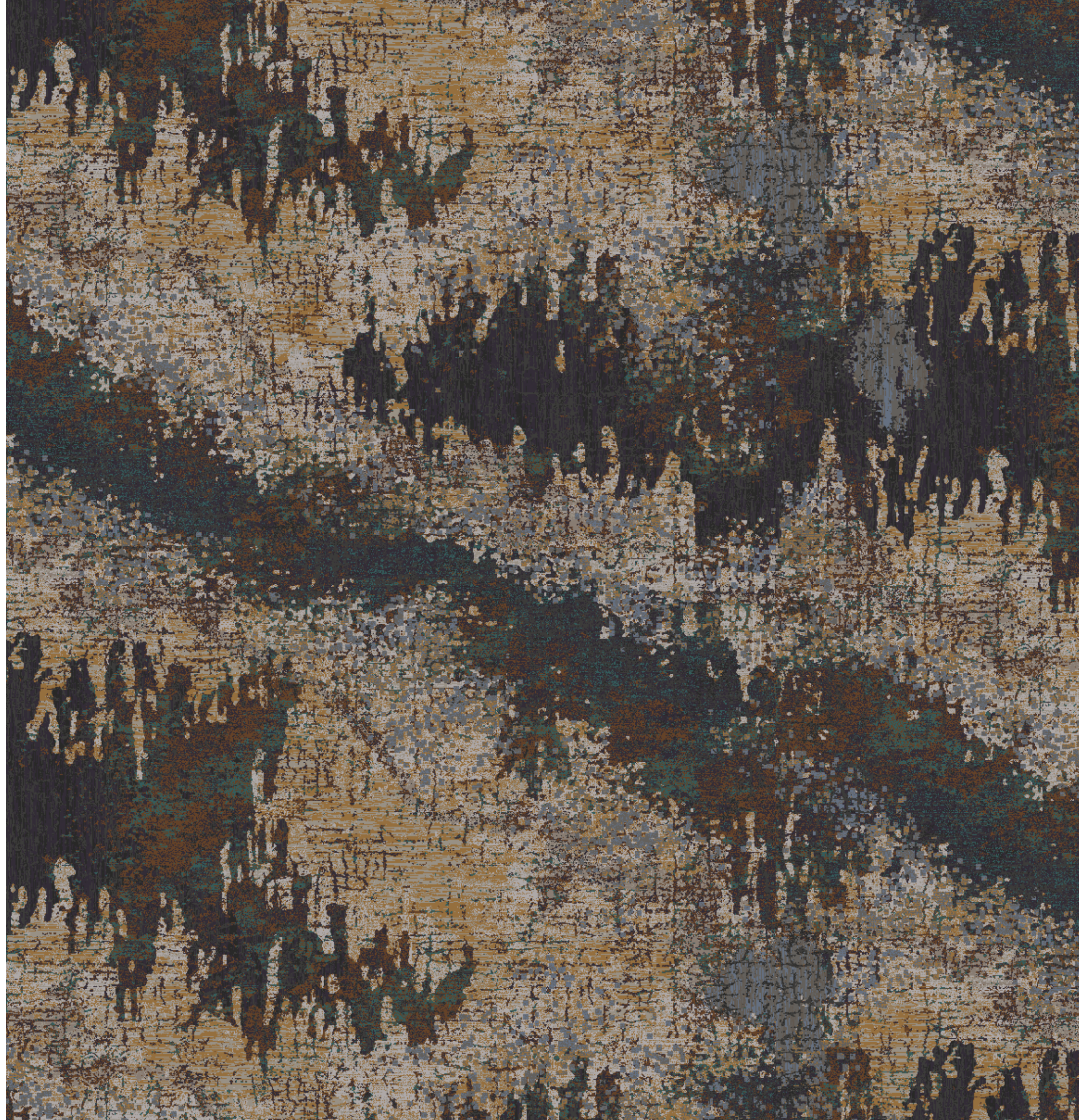


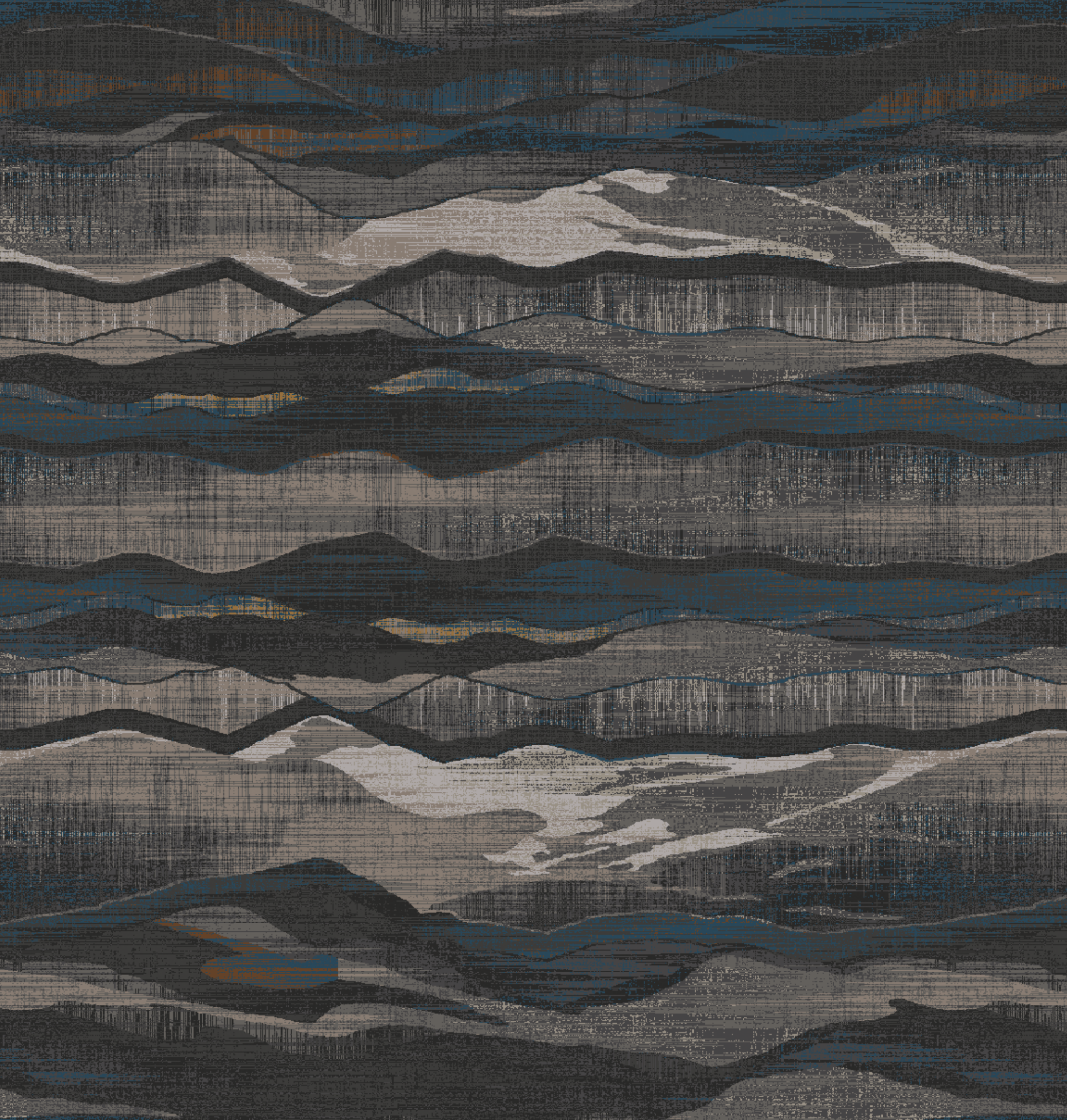
8. 29-3453



9. L7270

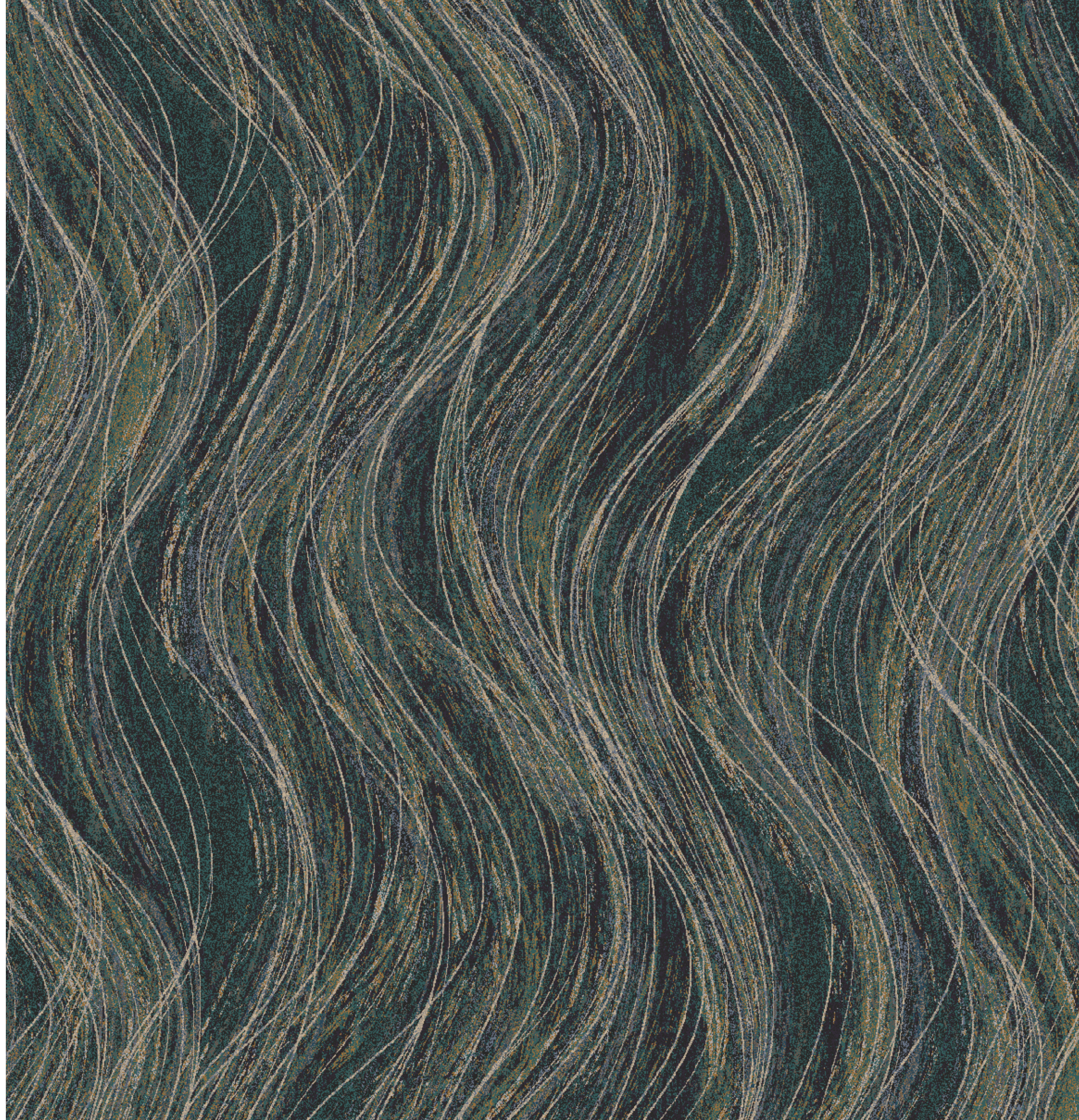


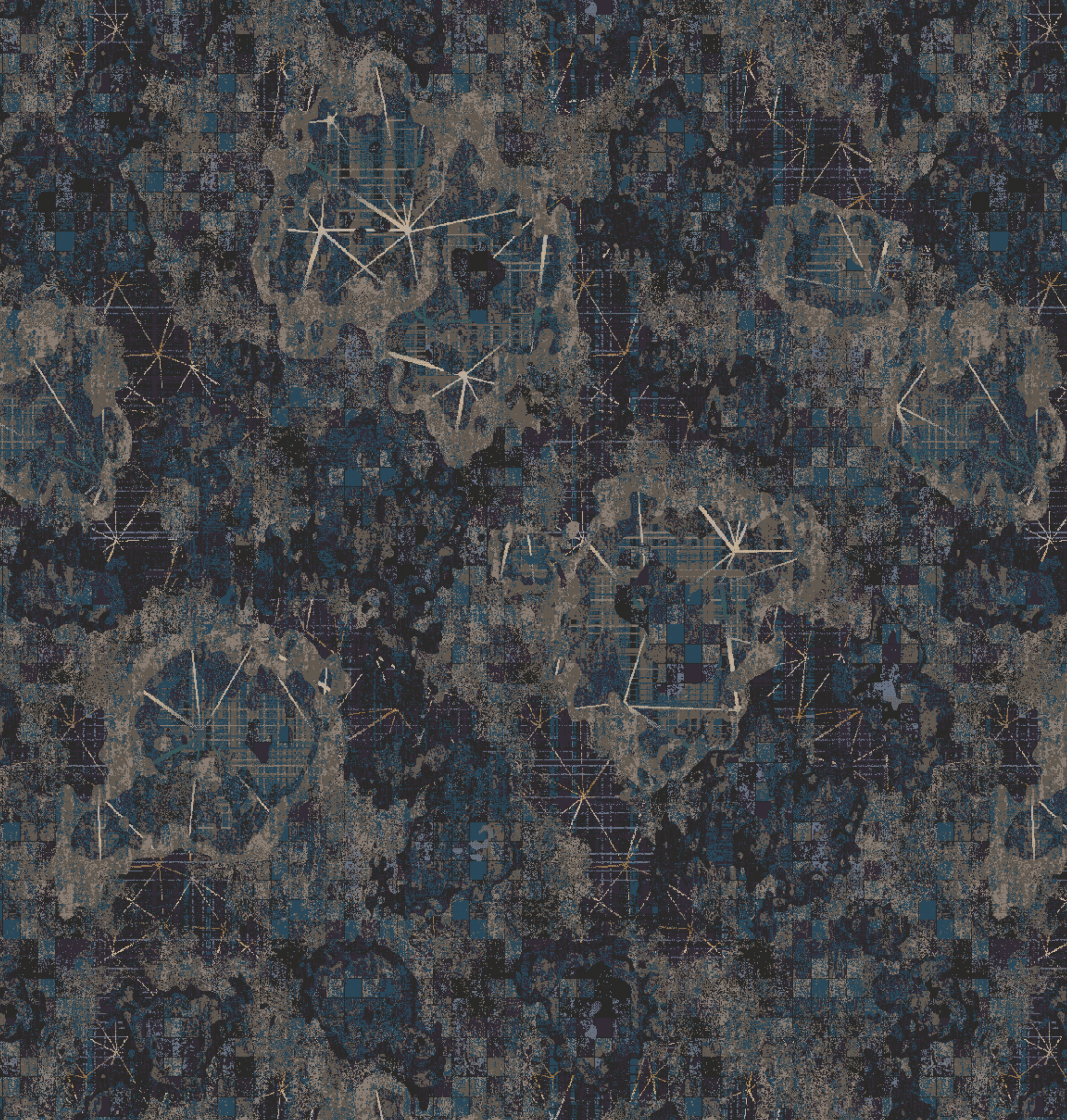




- 1. 20-V110 
- 2. 22-4001 
- 3. L7650 
- 4. 26-1905 
- 5. 40-T7161 
- 6. 26-2935 
- 7. 40-T8106 
- 8. 23-2830 
- 9. 40-T7794 
- 10. L7270 

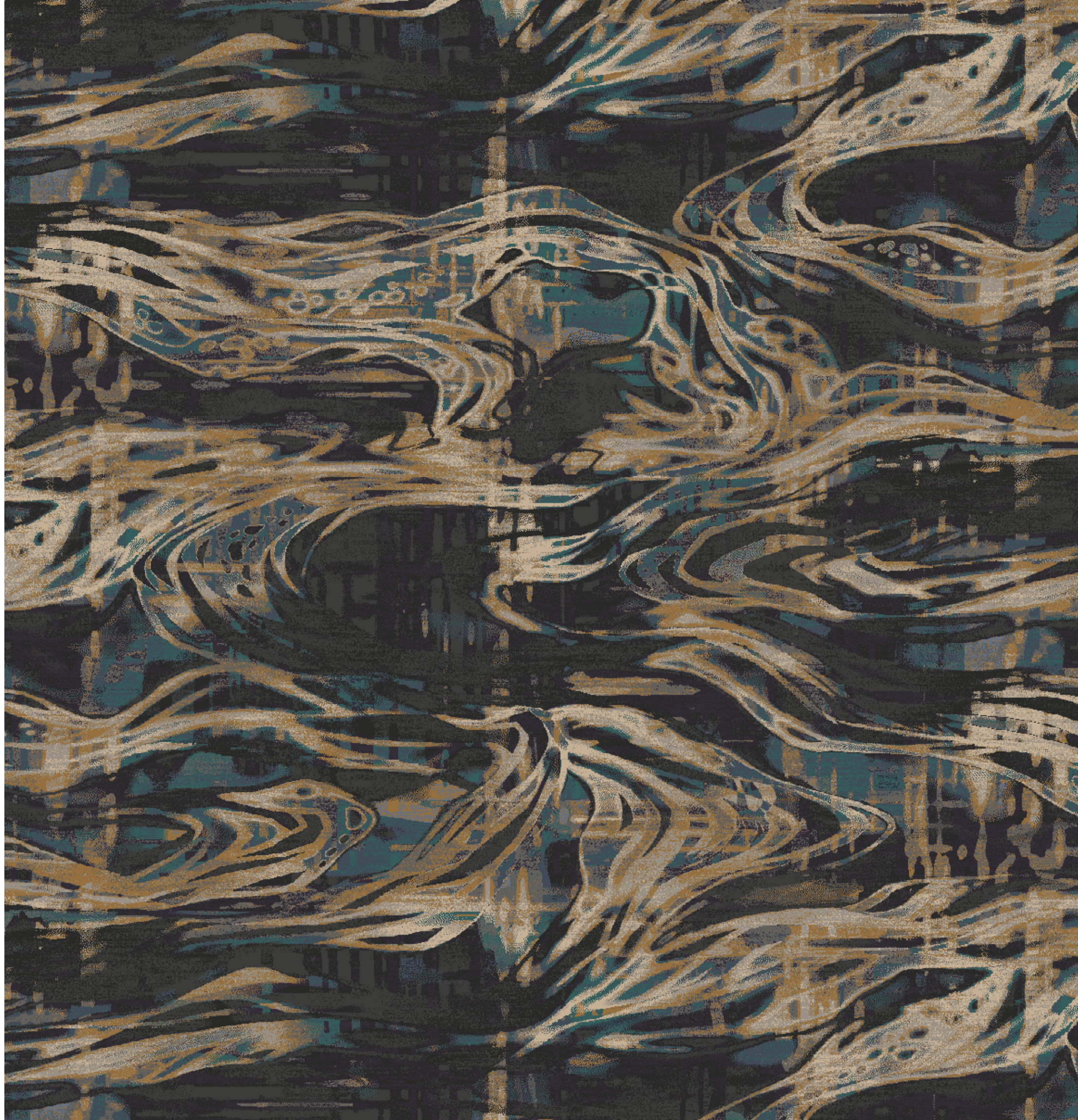
- | | | | |
|-------------|--|-------------|--|
| 1. 42-T7291 | | 7. 40-T7918 | |
| 2. 20-V110 | | 8. 23-4154 | |
| 3. 22-4001 | | 9. 20-V33 | |
| 4. L7650 | | 10. 23-2830 | |
| 5. 26-1905 | | 11. 29-3453 | |
| 6. 20-4062 | | 12. L7270 | |

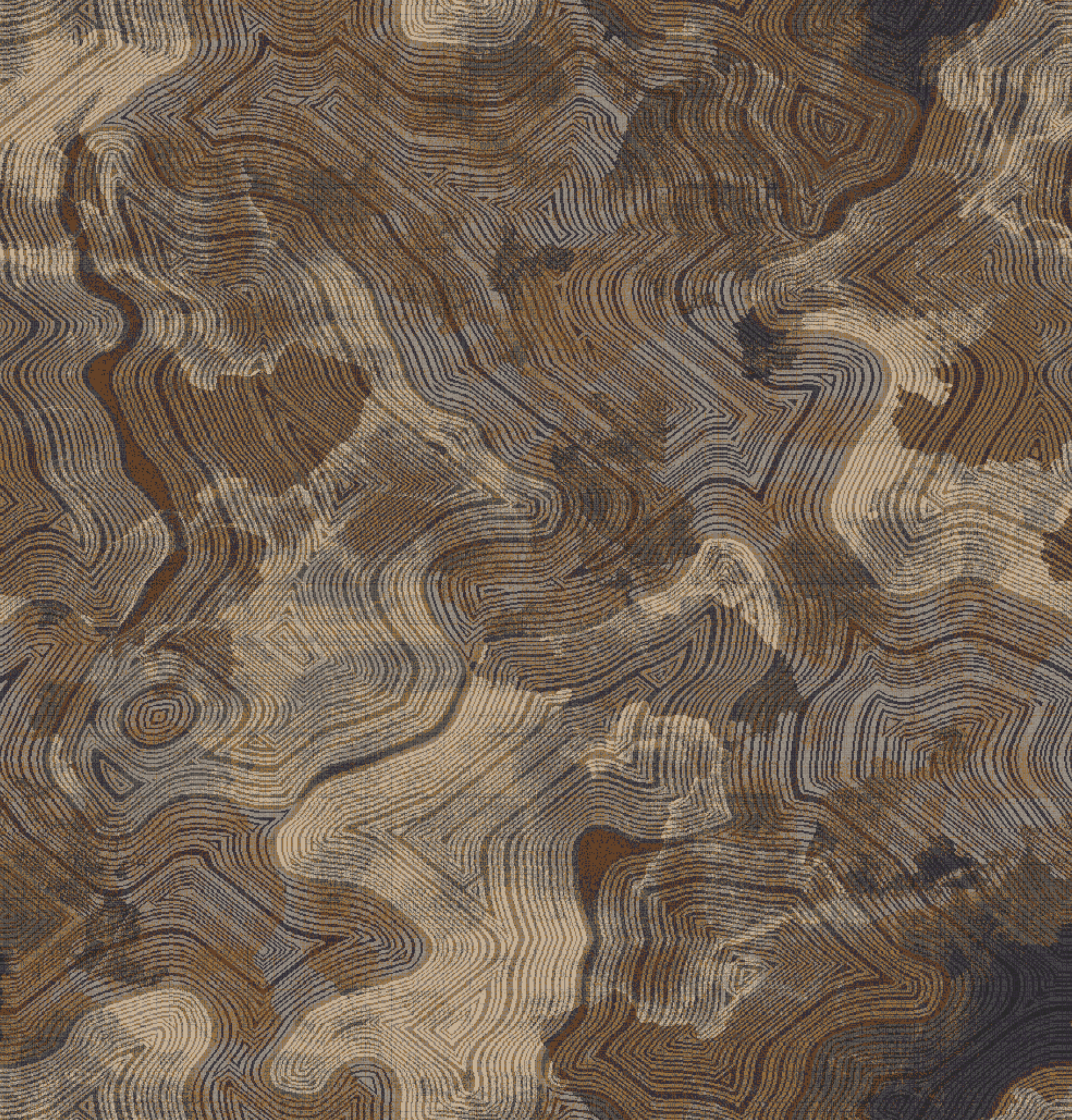




- 1. L7270 
- 2. 23-2830 
- 3. 20-V33 
- 4. 29-3453 
- 5. 40-T7918 
- 6. 23-4154 
- 7. 20-4062 
- 8. 26-1905 
- 9. L7650 
- 10. 22-4001 
- 11. 42-T7291 
- 12. 20-V110 

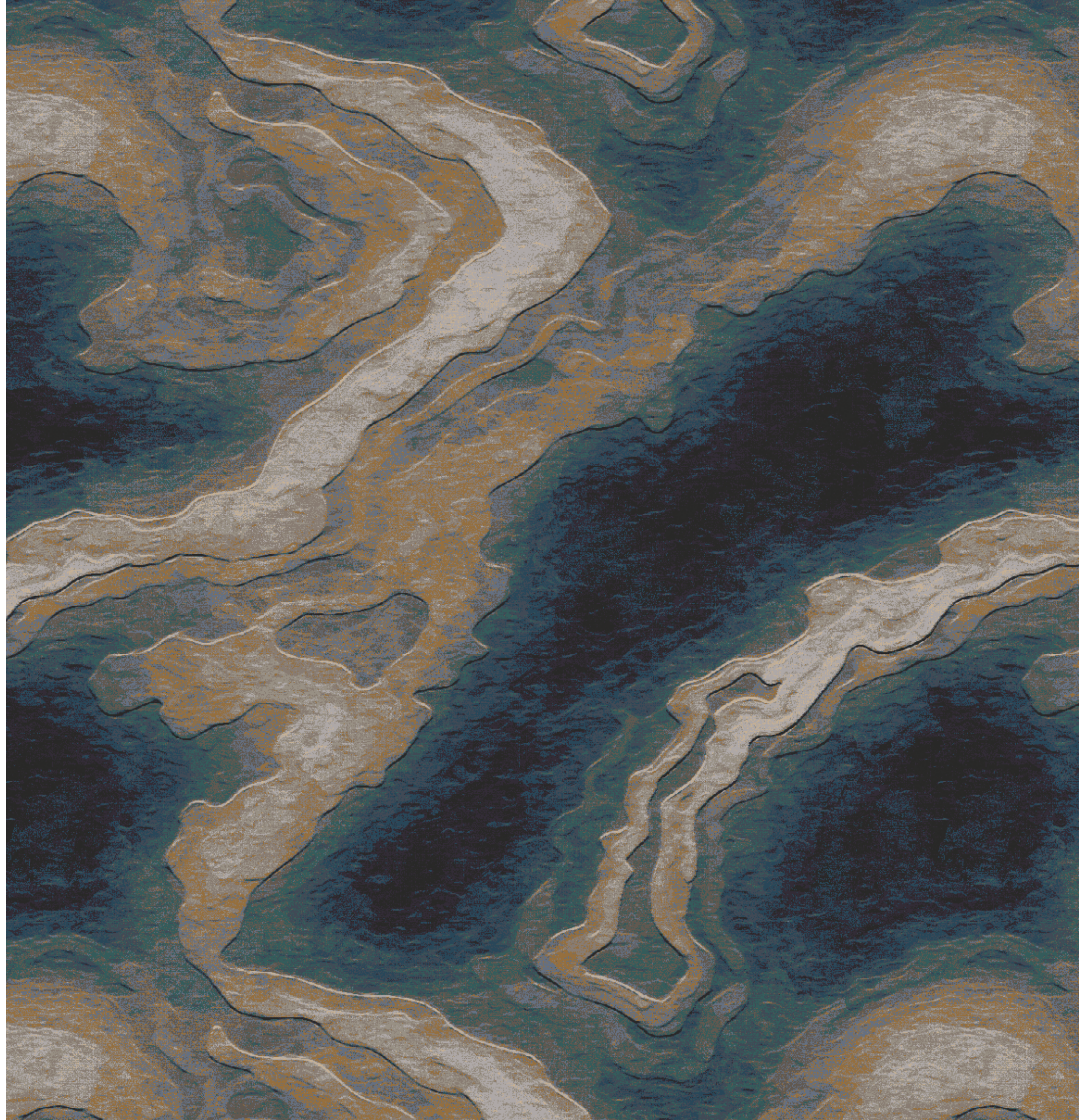
- | | | | |
|-------------|---|---|-------------|
| 1. 42-T7291 |  |  | 6. 23-4154 |
| 2. 22-4001 |  |  | 7. 20-V33 |
| 3. 26-1905 |  |  | 8. 40-T7794 |
| 4. 20-4062 |  |  | 9. 29-3453 |
| 5. 40-T7161 |  |  | 10. L7270 |

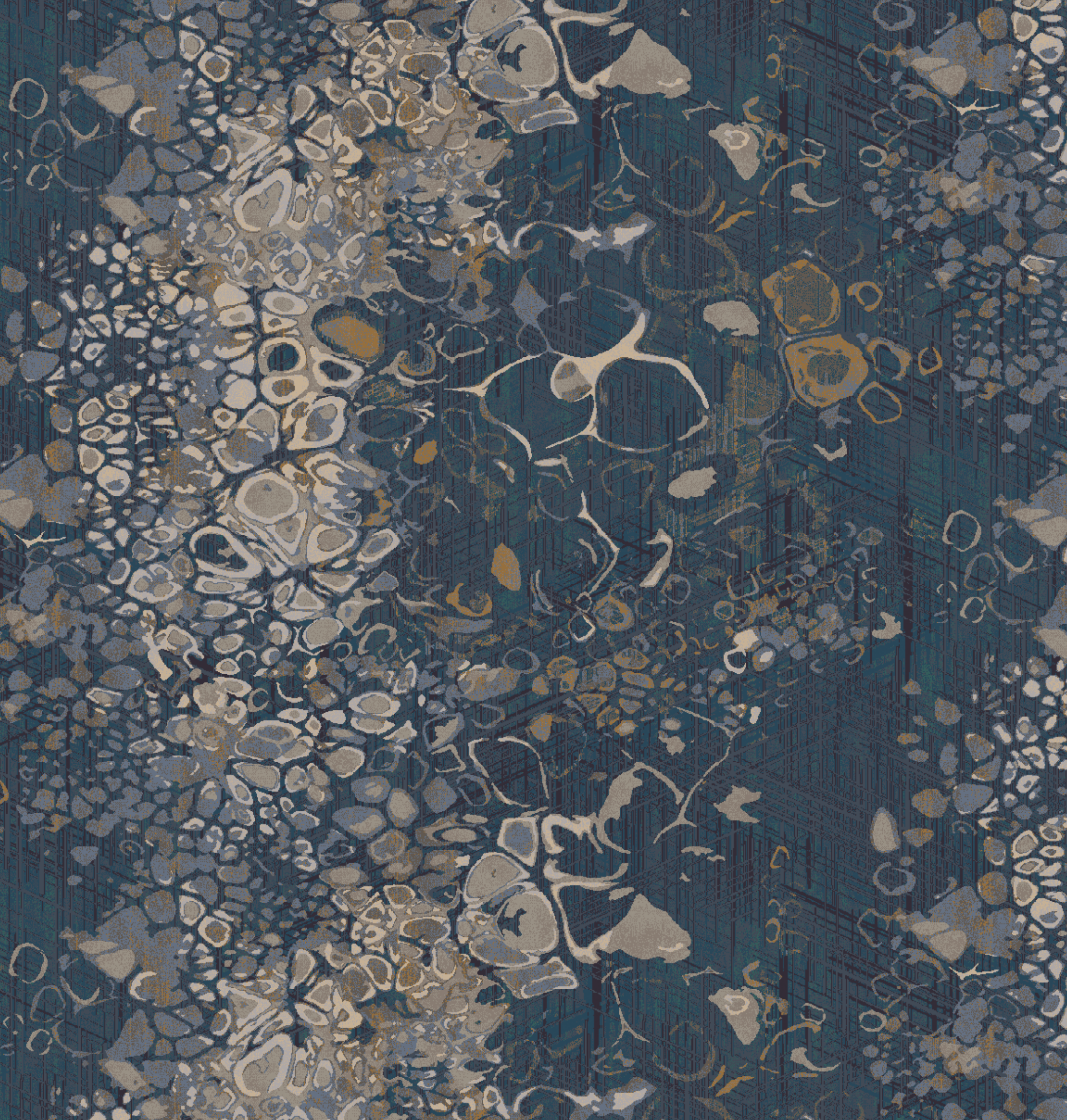




- 1. 42-T7291 
- 2. 22-4001 
- 3. L7650 
- 4. 26-1905 
- 5. 40-T7918 
- 6. 26-2935 
- 7. 40-T8106 
- 8. 29-3453 
- 9. L7270 

- | | | | |
|-------------|---|---|-------------|
| 1. 42-T7291 |  |  | 7. 40-T7918 |
| 2. 20-V110 |  |  | 8. 23-4154 |
| 3. 22-4001 |  |  | 9. 20-V33 |
| 4. L7650 |  |  | 10. 23-2830 |
| 5. 26-1905 |  |  | 11. 29-3453 |
| 6. 20-4062 |  |  | 12. L7270 |





- 1. 42-T7291 
- 2. 20-V110 
- 3. 22-4001 
- 4. L7650 
- 5. 26-1905 
- 6. 20-4062 
- 7. 40-T7918 
- 8. 23-4154 
- 9. 20-V33 
- 10. 23-2830 
- 11. 29-3453 



- | | | | |
|-------------|---|---|-------------|
| 1. 42-T7291 |  |  | 7. 40-T7918 |
| 2. 20-V110 |  |  | 8. 23-4154 |
| 3. 22-4001 |  |  | 9. 20-V33 |
| 4. L7650 |  |  | 10. 23-2830 |
| 5. 26-1905 |  |  | 11. 29-3453 |
| 6. 20-4062 |  |  | 12. L7270 |





- 1. 22-4001 
- 2. 40-T7161 
- 3. 20-V33 
- 4. 40-T8106 
- 5. 23-2830 
- 6. 40-T7794 
- 7. 29-3453 
- 8. L7270 

- | | | | |
|-------------|---|---|-------------|
| 1. 42-T7291 |  |  | 6. 20-4062 |
| 2. 20-V110 |  |  | 7. 40-T7918 |
| 3. 22-4001 |  |  | 8. 23-4154 |
| 4. L7650 |  |  | 9. 20-V33 |
| 5. 26-1905 |  |  | 10. L7270 |



Quickweave™ from Brintons is an innovative approach to carpet design. Select a design, recolor and we'll weave to order.

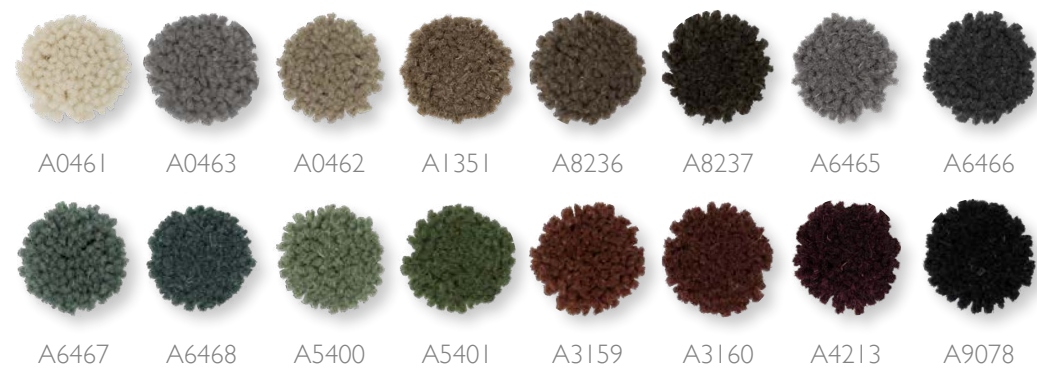
Our palettes have been carefully selected for their versatility and commercial suitability.

Revive have 24 colors, Inception and Odyssey have 16 colors each, Sequence and Unity have 10 colors each, and the Naturals palette offers 8 undyed colors to choose from.

The QuickWeave™ program is not limited to just these designs. There are hundreds of designs available across various styles on our Design Studio Online.

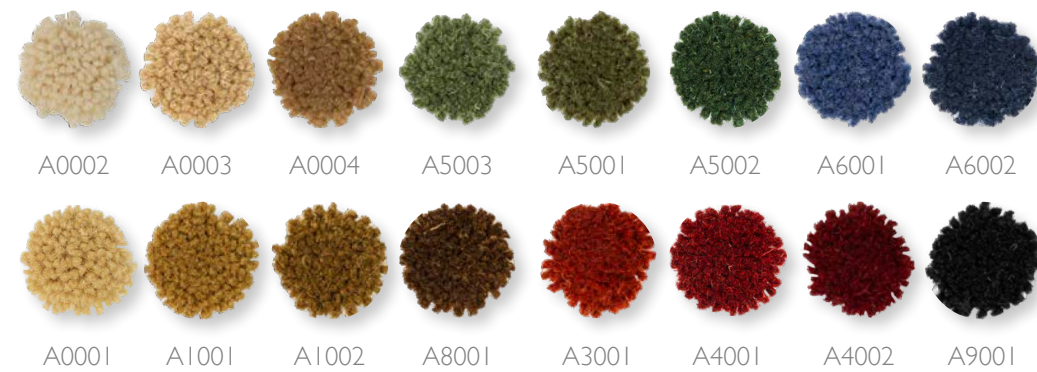
PALETTE: INCEPTION

80% wool 20% nylon, Poland, 4m wide



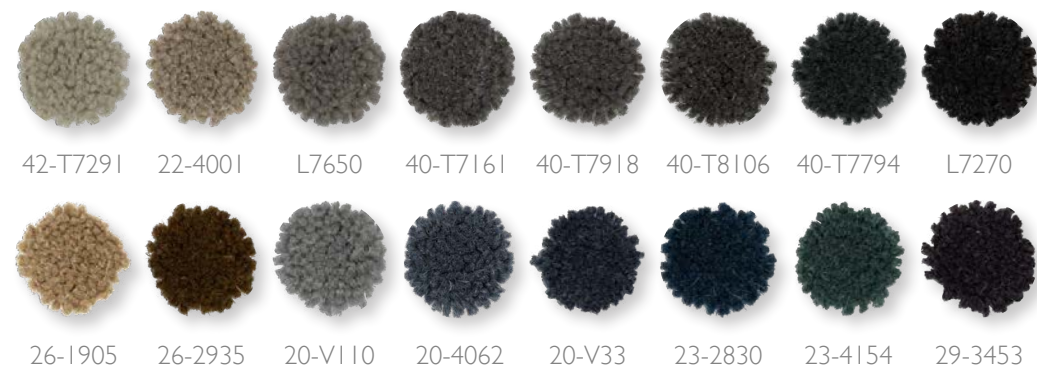
PALETTE: SEQUENCE

80% wool 20% nylon, Poland, 4m wide



PALETTE: ODYSSEY

80% wool 20% nylon, Poland, 4m wide



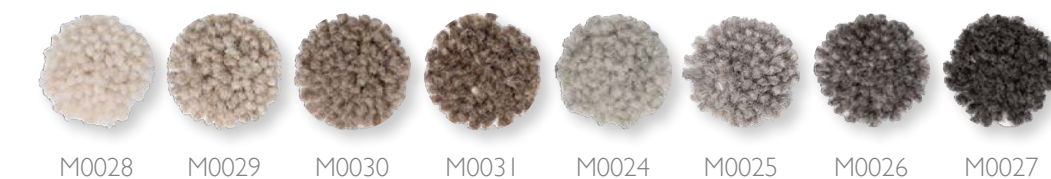
PALETTE: REVIVE

80% wool 20% nylon, Poland, 4m wide



PALETTE: NATURALS

100% undyed wool, Poland, 4m wide



PALETTE: UNITY

80% wool 20% nylon, Poland, 4m wide



Visit dso.brintons.net to start your journey today.





Brintons

**USQW
VOL I**

For more inspiration or to contact your local sales rep, please visit our corporate website.

www.brintons.net

©Brintons Carpets Limited 2024. All copyright, design rights, and intellectual property rights existing in our designs are and will remain the property of Brintons Carpets Limited. Any infringement upon those rights will be pursued vigorously. Colors are reproduced within the limits of the printing process.