



BY APPOINTMENT  
TO HER MAJESTY THE QUEEN  
CARPET MANUFACTURERS  
BRINTONS CARPETS LIMITED, KINGSMINSTER

# Brintons



 QuickWeave™

Introducing the new  
Revive Palette

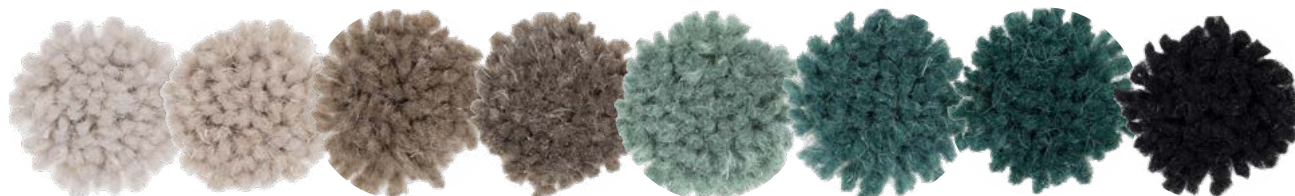
## Quickweave™ by Brintons is an innovative approach to carpet design.

Having spent the best part of the last two years in and out of lockdowns, the world has changed in a way we have never before experienced. The new Revive palette explores these changes and how they have impacted on interior trends.

Being forced to remain indoors far more than we ever have before has focused our minds on our interiors and how they make us feel. The colour blue has become increasingly important - in an unstable climate we are seeking calm and focusing on our mental and physical well being. Blue offers dependable versatility, calm and hope.

With continuing conversation around the state of our planet we have begun using more green in our interiors which provides nourishment and solace; creating an escape. As we spend more and more time indoors we look to elevate our interiors using deep reds and purples to create luxurious spaces that we love to spend precious time in.

Adding to these key tones a backdrop of warm and inviting neutrals to the palette has created a useable and inspiring trend palette which has a rich depth of colour and the ability to suit a wide variety of interior spaces from living rooms to hotels to casinos.



Pale Taupe  
A0828

Taupe  
A0829

Clove  
A0830

Coffee  
A0831

Eucalyptus  
A5808

Teal  
A5809

Dark Teal  
A5810

Off-Black  
A9163



Old Gold  
A1689

Ruby  
A4332

Grape  
A4333

Mulberry  
A4334

Silver  
A61194

Flint  
A61195

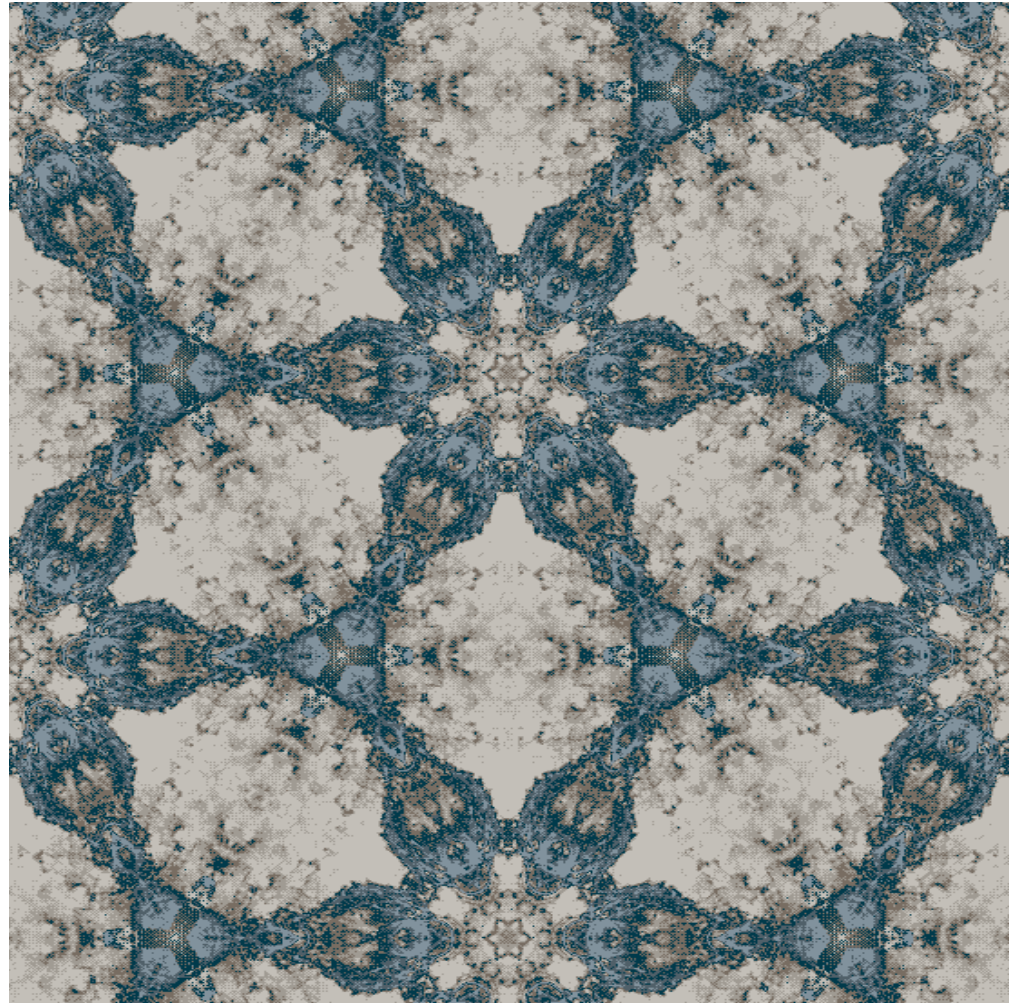
Aegean  
A61196

Denim  
A61197

The new palette is presented along with a collection of 24 brand new designs showcasing how the colours in the palette can be used. The palette can also be used across the entire Quickweave design collection, giving an infinite number of design and colour combinations. Use our online design tool [dso.brintons.net](https://dso.brintons.net) for inspiration and to recolour your chosen design.

- A61194
- A61195
- A61196
- A0828
- A0830
- A0829

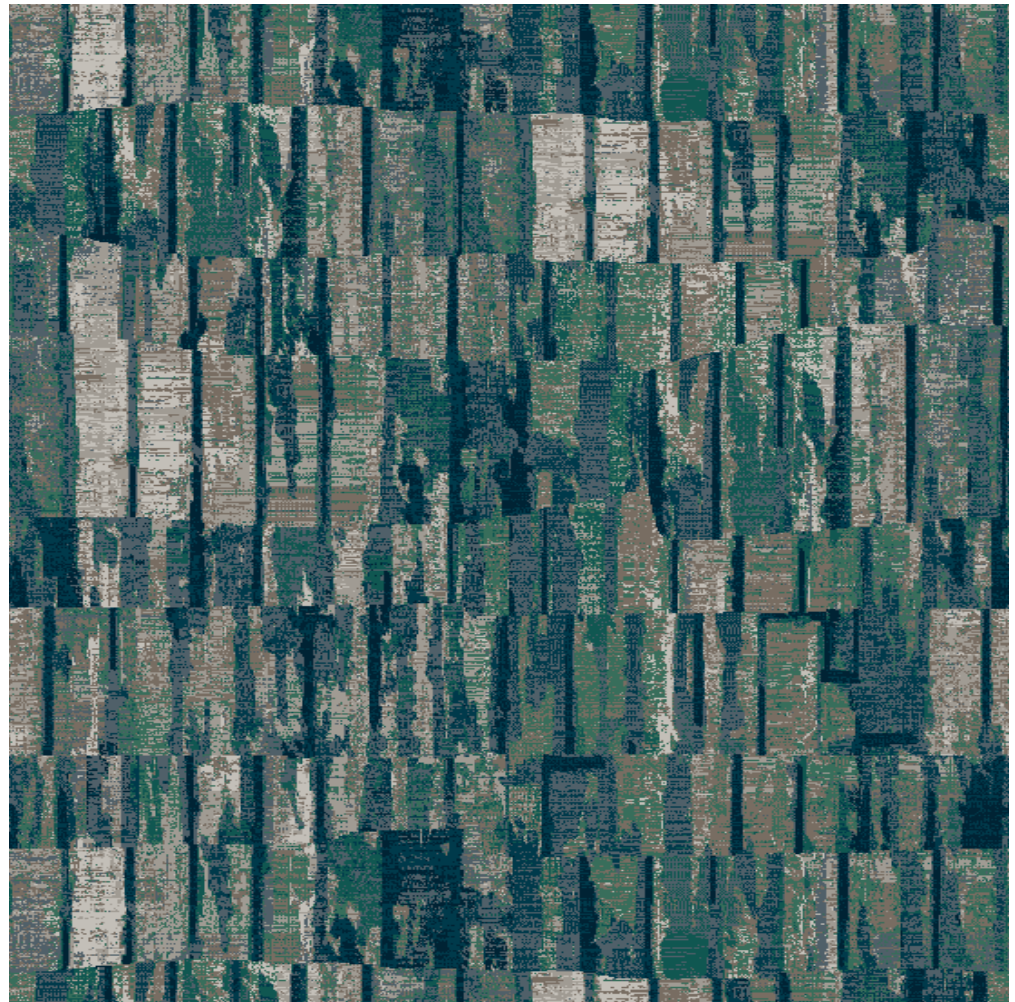
I/Q2008



Pattern repeat 2.00m x 1.13m

- A61195
- A0830
- A61196
- A5808
- A0829
- A5809
- A61197
- A0828

I/Q2006



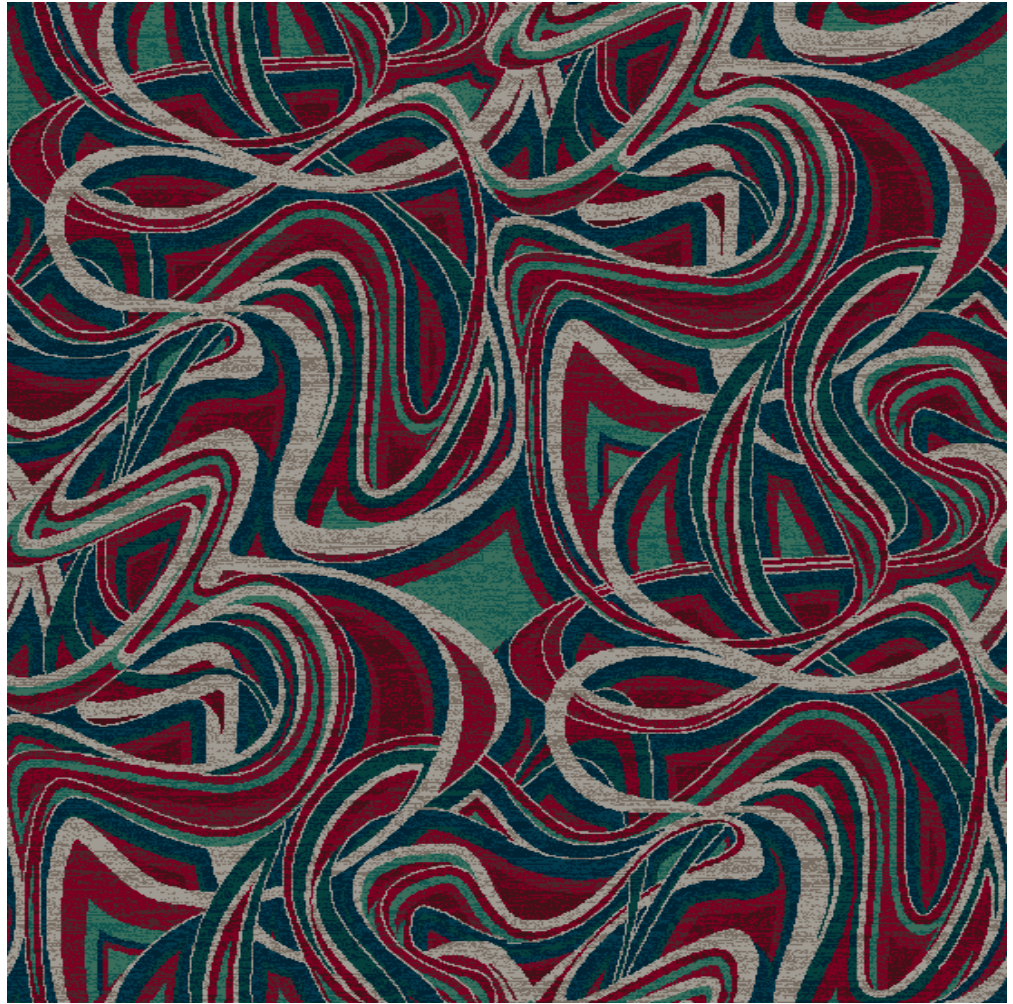
Pattern repeat 2.00m x 1.72m



- A0829
- A0830
- A61196
- A61197
- A4334
- A5810
- A5808
- A5809
- A4333
- A4332

2/Q2017

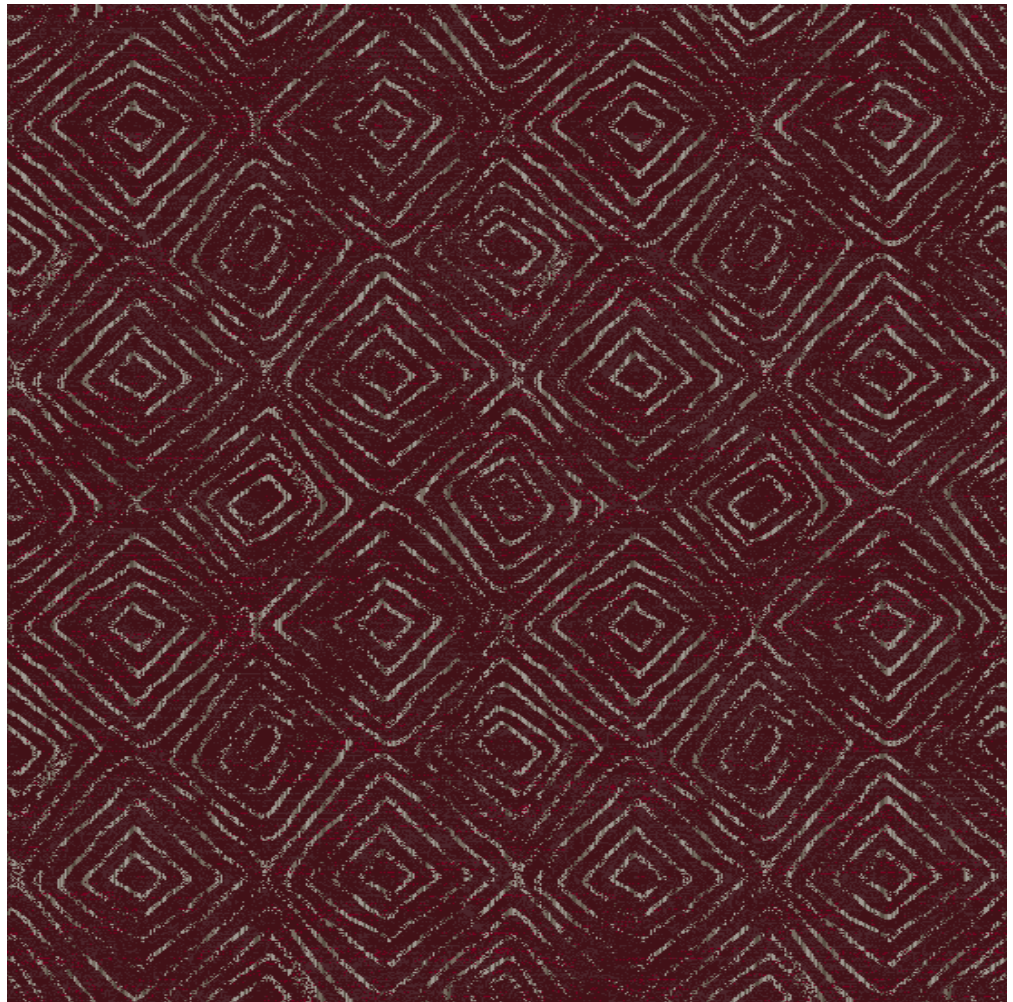
Pattern repeat 2.00m x 1.99m



- A4334
- A4333
- A4332
- A0831
- A0830
- A0829

2/Q2021

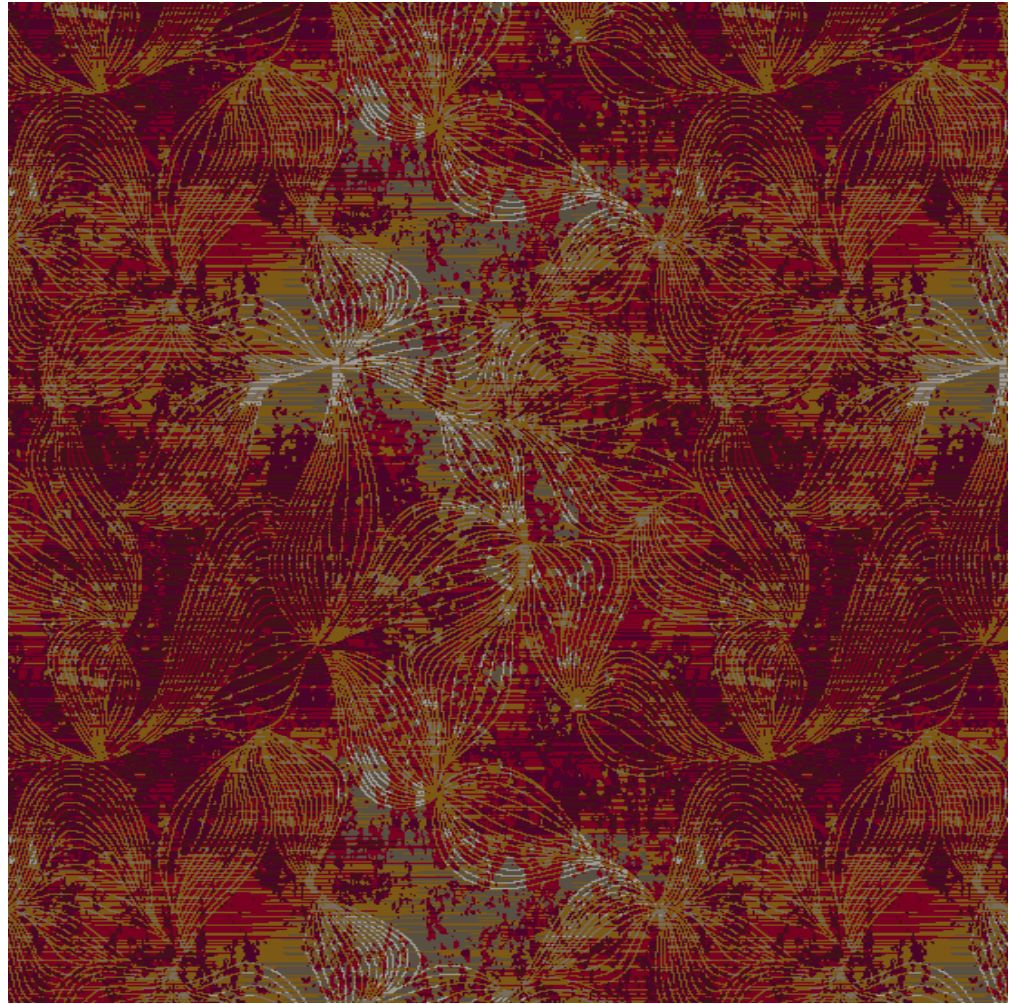
Pattern repeat 2.00m x 2.00m



- A0829
- A0830
- A0831
- A1689
- A4334
- A4332
- A4333

2/Q2019

Pattern repeat 1.33m x 1.34m





- A4332
- A4334
- A4333
- A0831
- A1689
- A0829
- A0830
- A0828

2/Q2020

Pattern repeat 2.00m x 2.00m

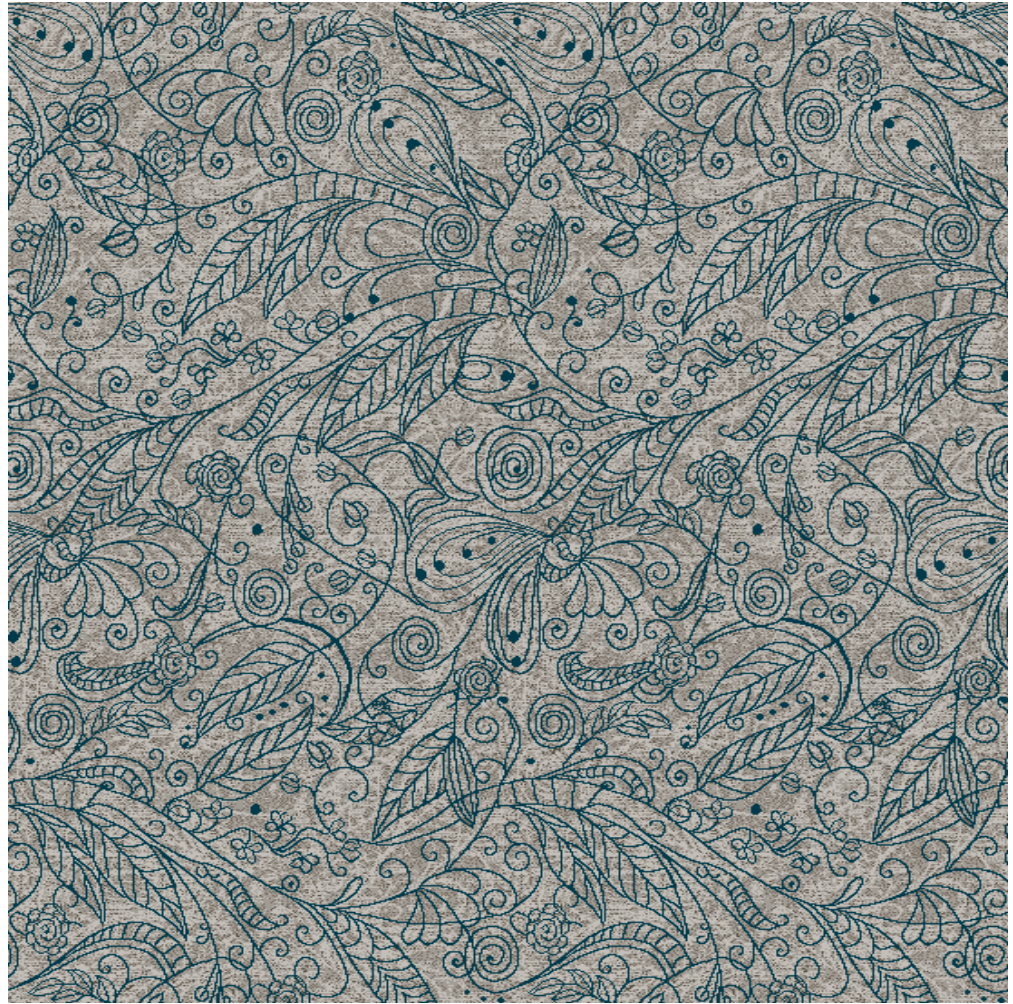




-  A61196
-  A0831
-  A0830
-  A0829
-  A0828

I/Q2022

Pattern repeat 1.00m x 2.03m



-  A0828
-  A0829
-  A0830
-  A5808
-  A5809
-  A1689
-  A4332

I/Q2015

Pattern repeat 2.00m x 0.78m



- A0828
- A0829
- A0830
- A0831
- A61194
- A61195
- A61196

1/Q2013

Pattern repeat 1.33m x 2.26m



- A0831
- A61197
- A0830
- A1689
- A61195
- A61196
- A5808
- A0829
- A5809
- A61194
- A5810
- A9163

2/Q2025

Pattern repeat 4.00m x 4.00m



- A0829
- A0828
- A0830
- A0831
- A61194
- A5810
- A5809
- A5808

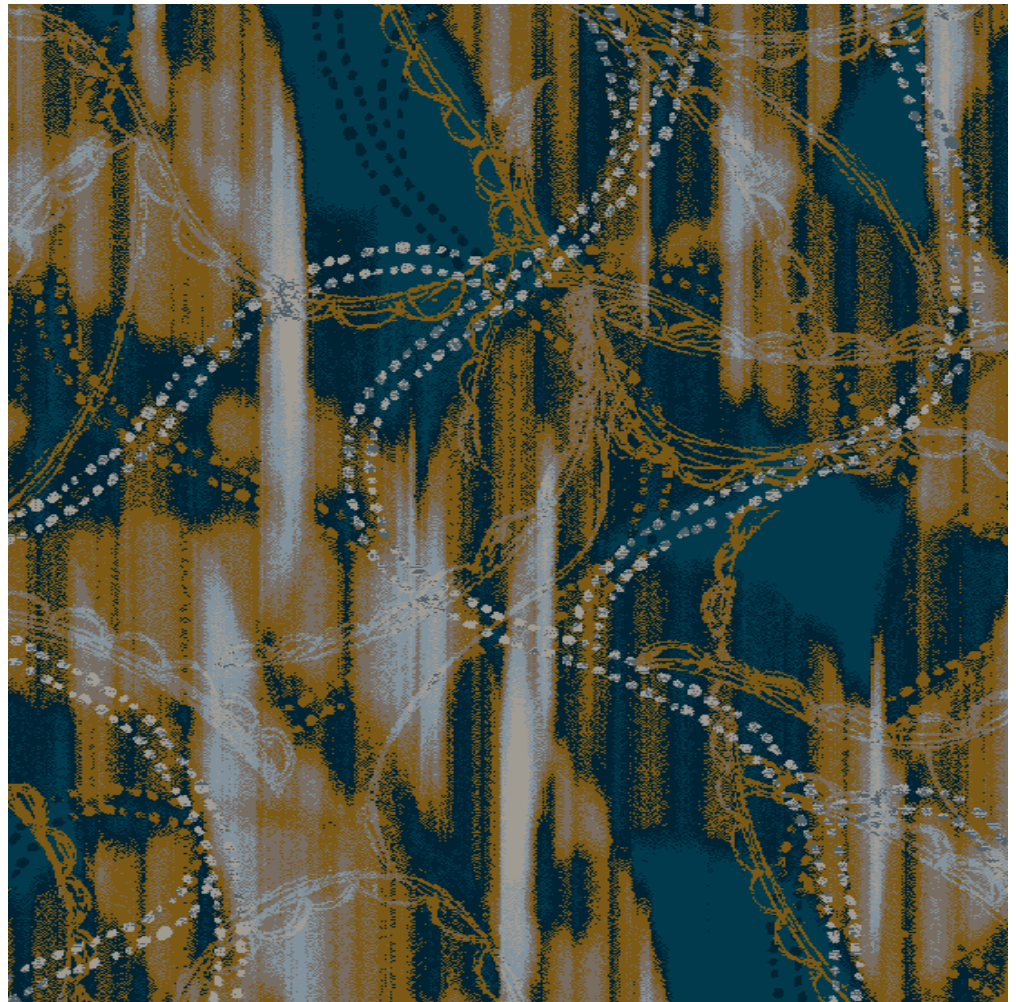
1/Q2023



Pattern repeat 4.00m x 3.66m

- A61196
- A61197
- A1689
- A0830
- A61194
- A0829
- A61195

2/Q2018



Pattern repeat 4.00m x 3.66m

- A0828
- A0829
- A61195
- A61196

1/Q2014

Pattern repeat 1.00m x 1.20m



- A0829
- A0828
- A61196
- A61195
- A0830
- A61194
- A0831
- A5809

2/Q2005

Pattern repeat 2.00m x 2.00m

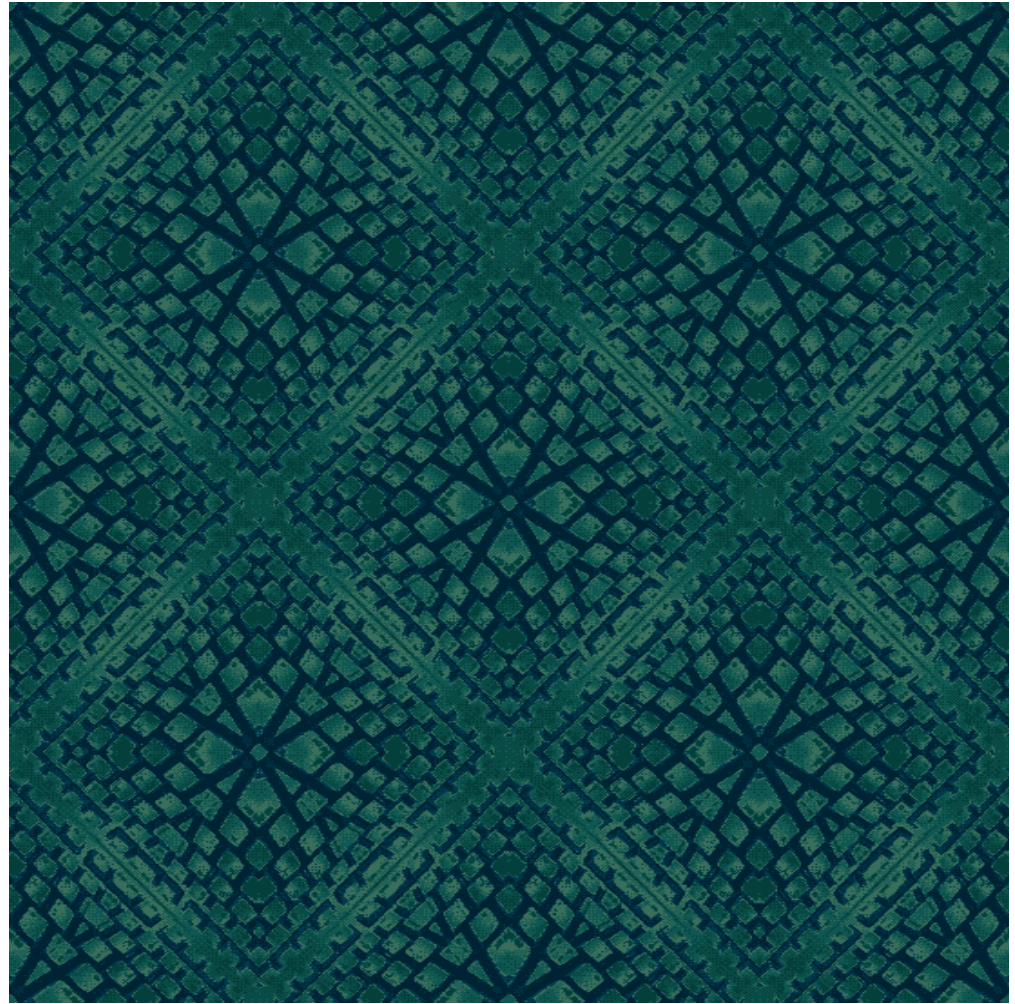




- A61197
- A5810
- A5809
- A5808
- A61196

2/Q2007

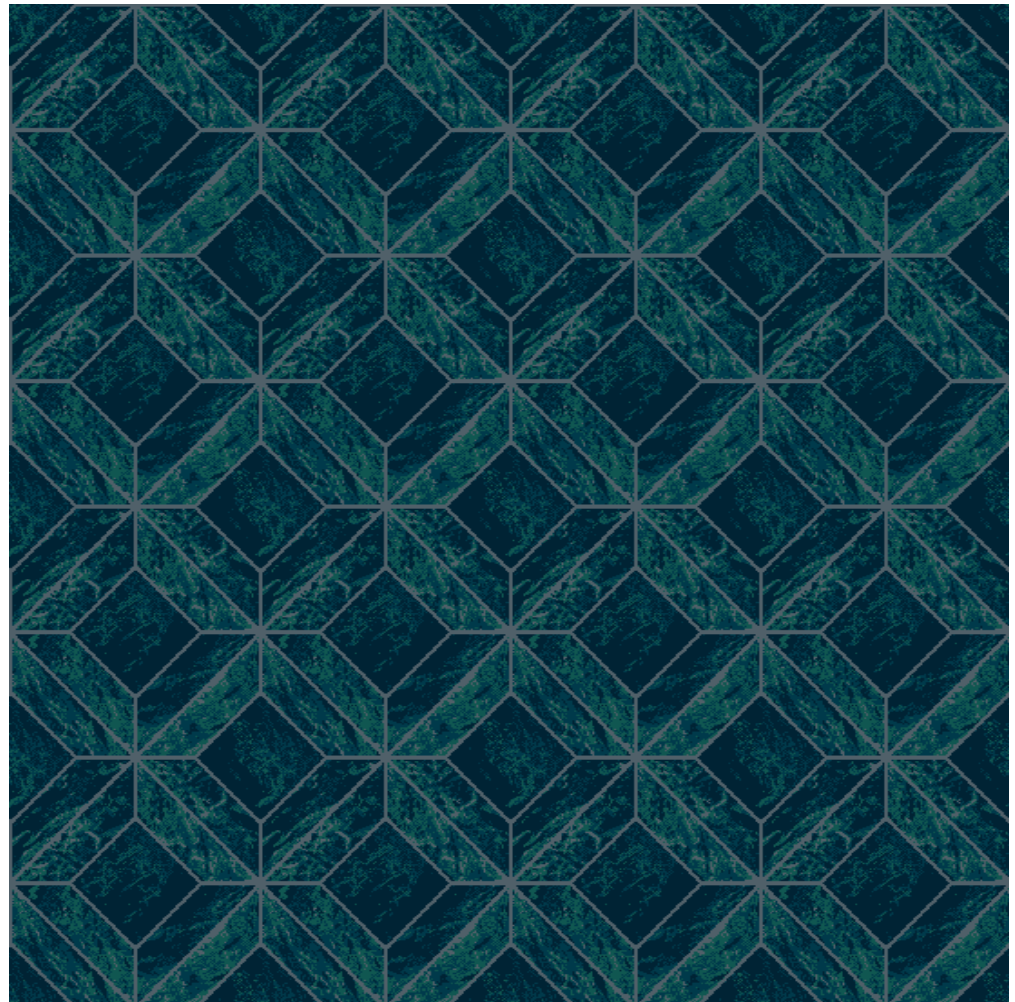
Pattern repeat 1.00m x 1.00m



- A61197
- A61196
- A5809
- A61195

2/Q2012

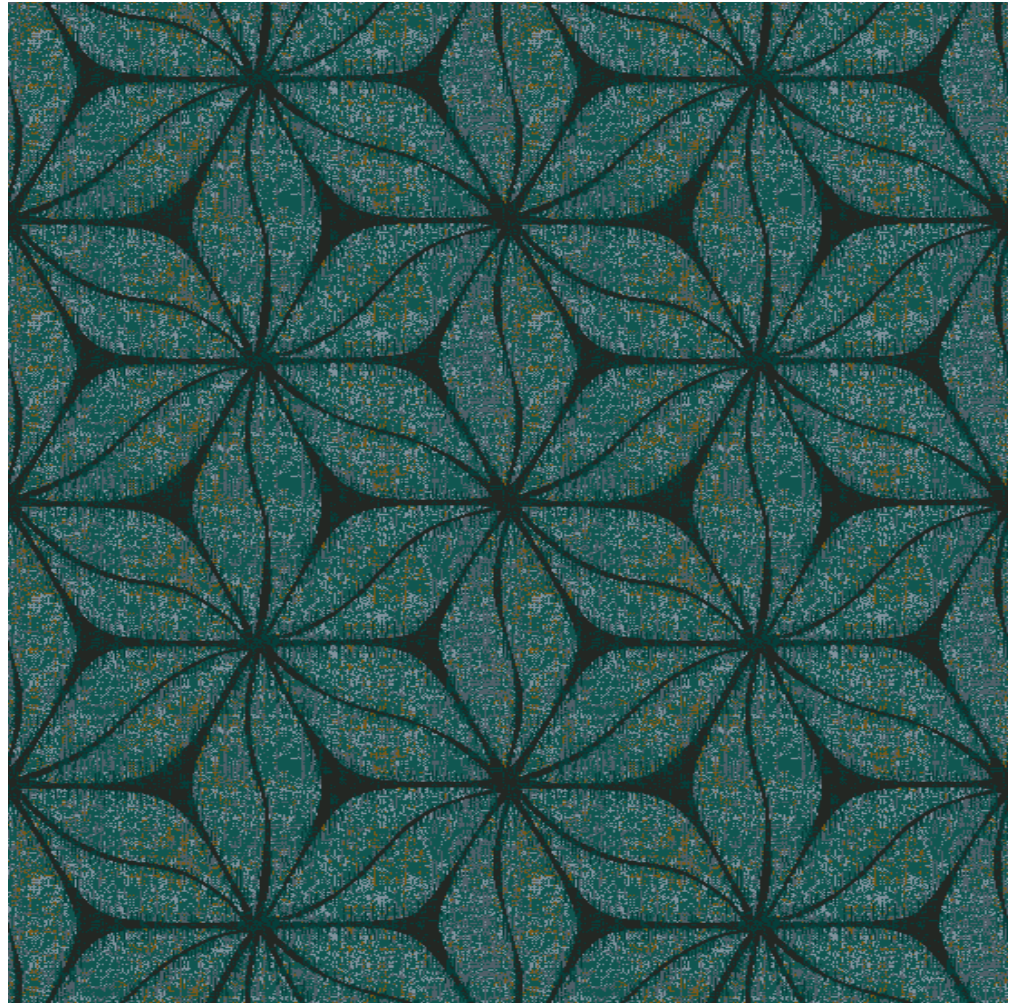
Pattern repeat 1.00m x 1.01m



- A5809
- A61194
- A9163
- A5810
- A1689
- A61195

2/Q2010

Pattern repeat 1.00m x 0.56m



- A61196
- A61197
- A0831
- A4333
- A0830
- A4332
- A1689
- A5810
- A9163
- A5808
- A5809

1/Q2024

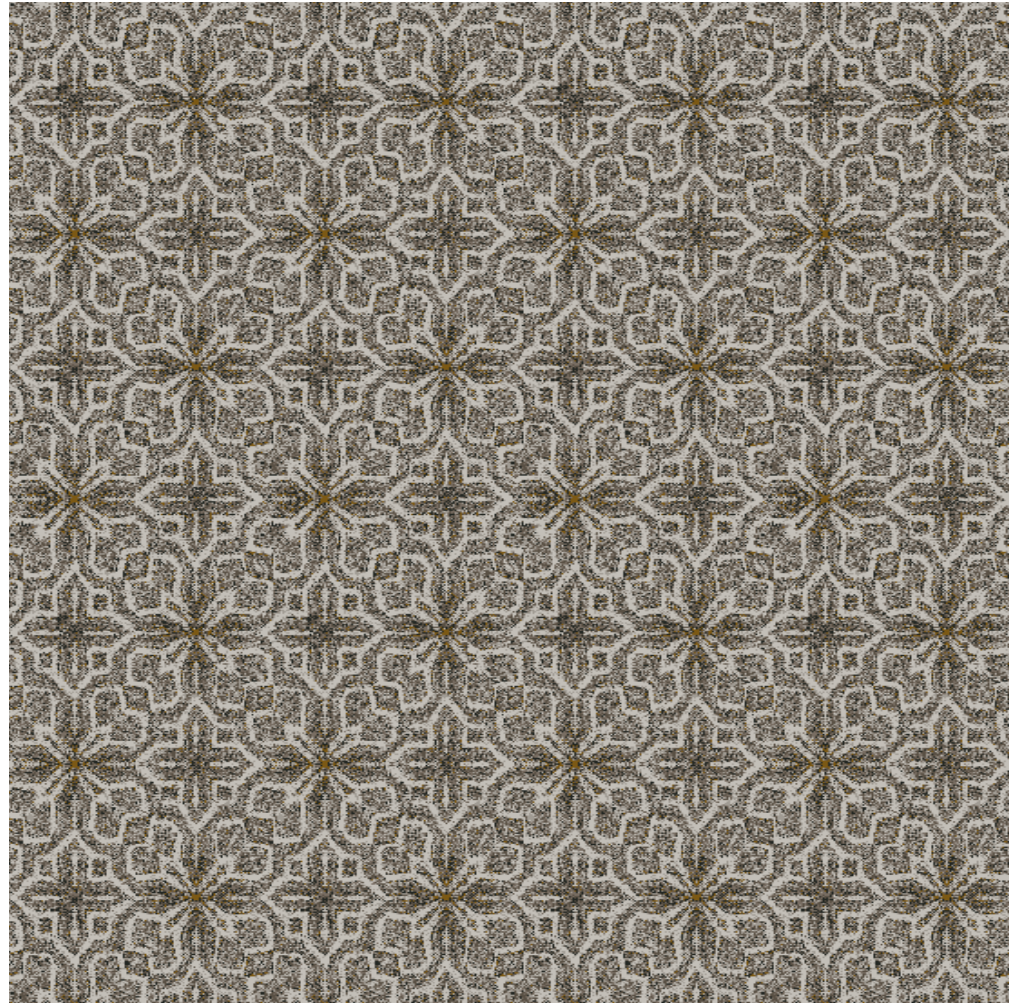
Pattern repeat 4.00m x 2.00m



- A0828
- A0829
- A0830
- A0831
- A9163
- A1689

1/Q2009

Pattern repeat 0.50m x 1.06m



- A0828
- A0829
- A9163
- A0830
- A0831
- A4333
- A4334

2/Q2016

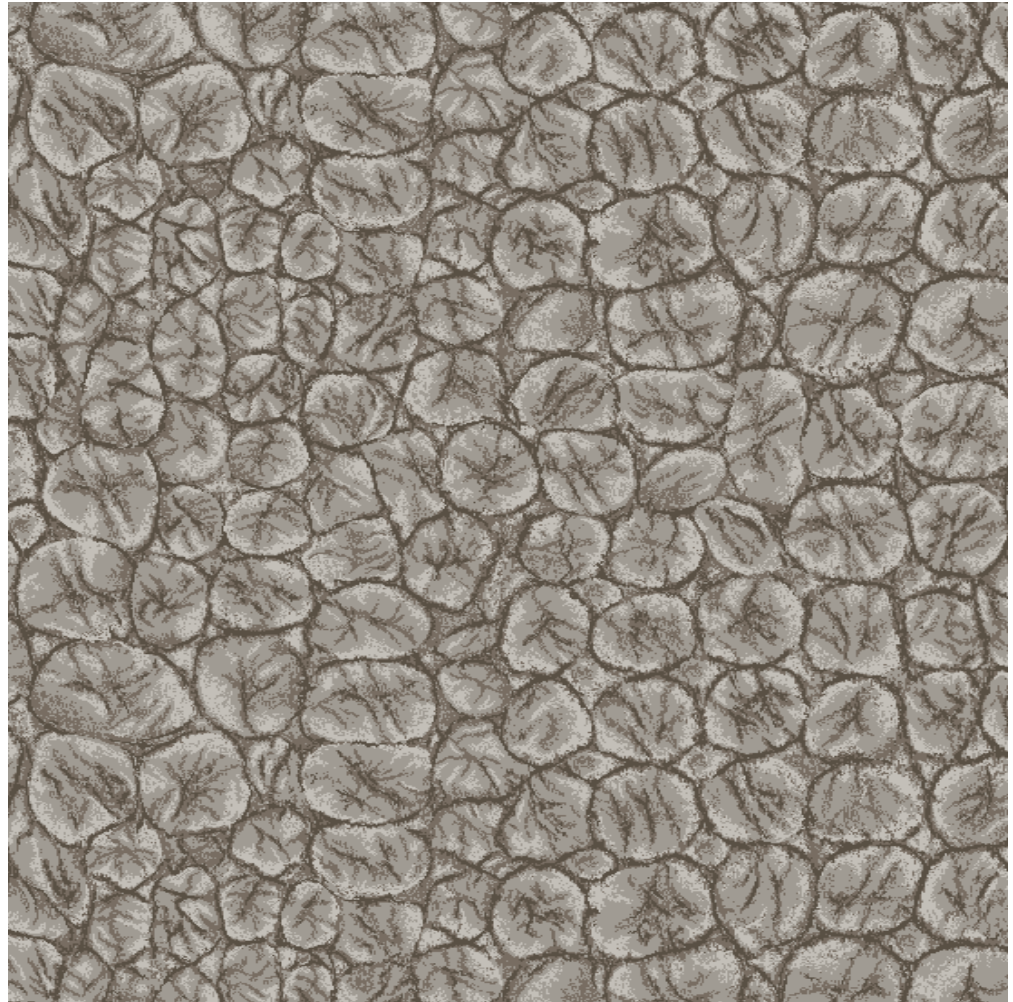
Pattern repeat 1.00m x 1.00m



- A0828
- A0829
- A0830
- A0831

I/Q2028

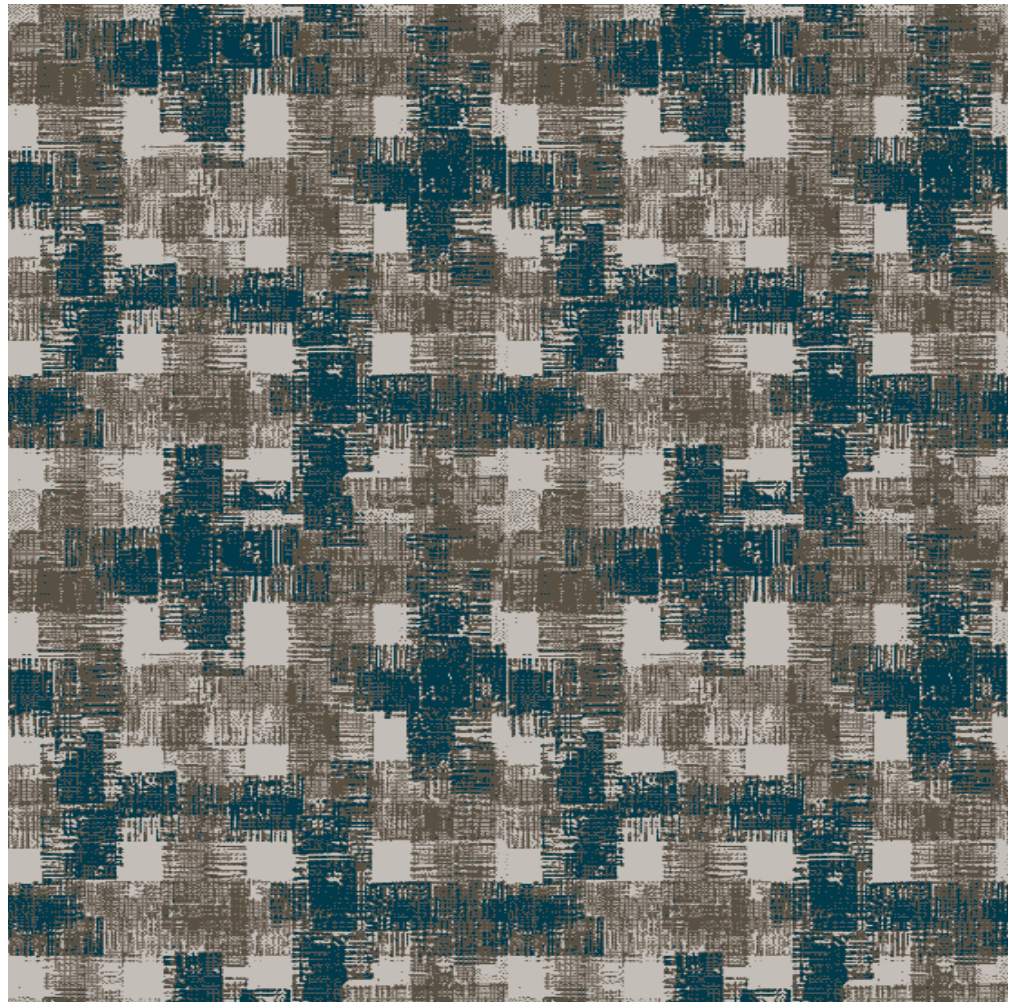
Pattern repeat 2.00m x 1.34m



- A0828
- A0829
- A0830
- A0831
- A61195
- A61196

I/Q2011

Pattern repeat 1.00m x 1.02m





- A0828
- A0829
- A0830

2/Q2026

Pattern repeat 4.00m x 2.54m



- A0828
- A0829
- A0830
- A0831

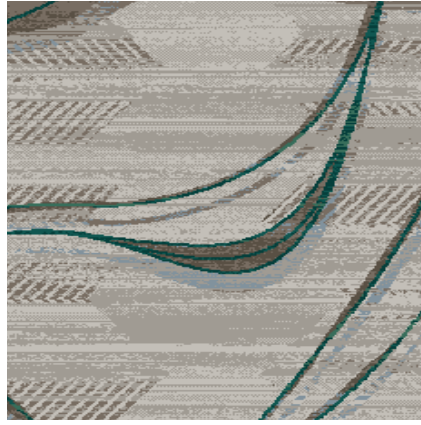
1/Q2027

Pattern repeat 1.00m x 1.00m

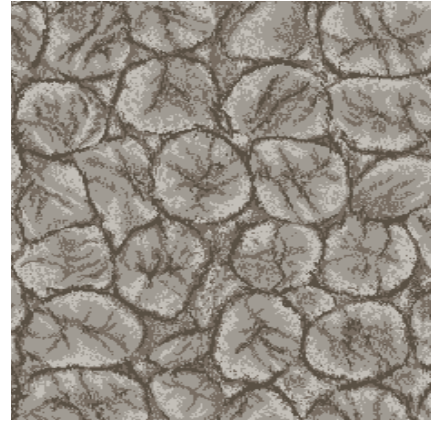




2/Q2026



1/Q2023



1/Q2028



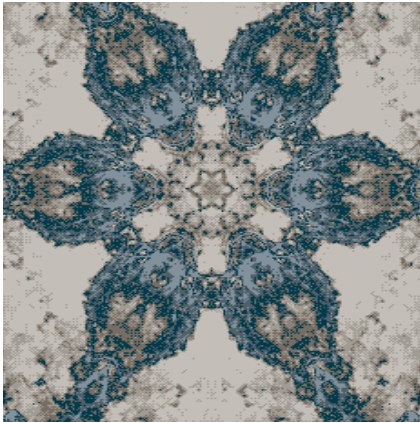
1/Q2014



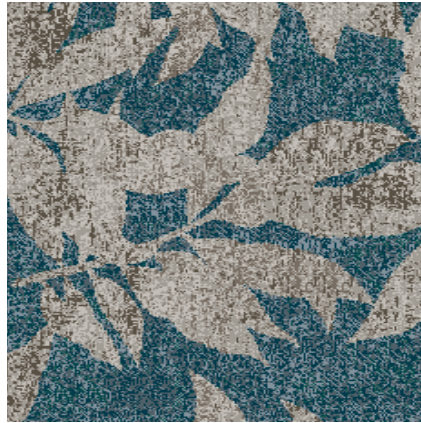
1/Q2022



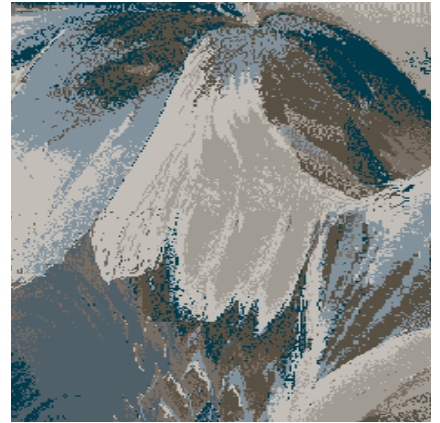
1/Q2015



1/Q2008



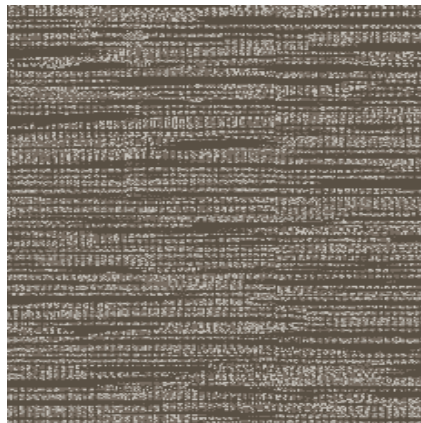
2/Q2005



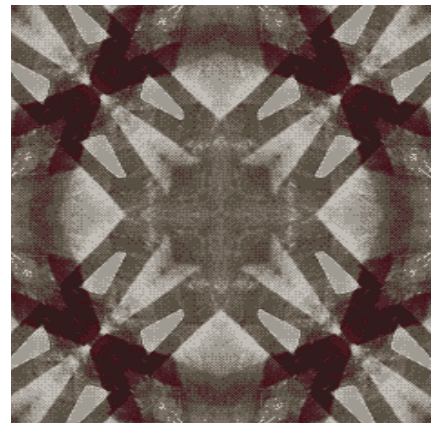
1/Q2013



1/Q2009



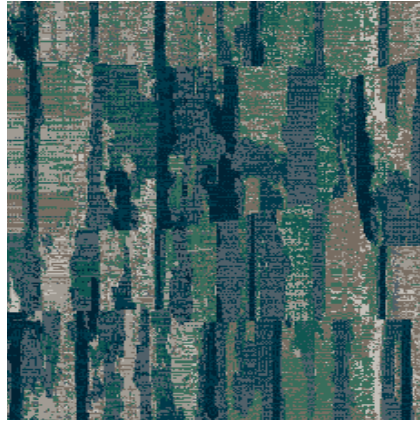
1/Q2027



2/Q2016



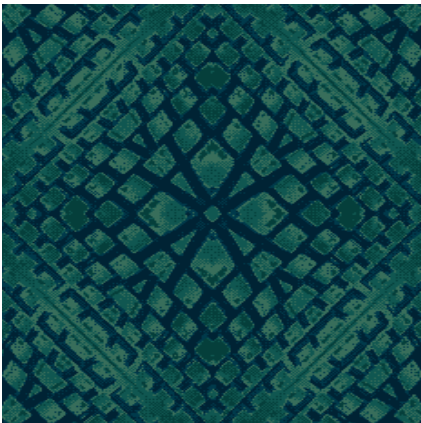
1/Q2011



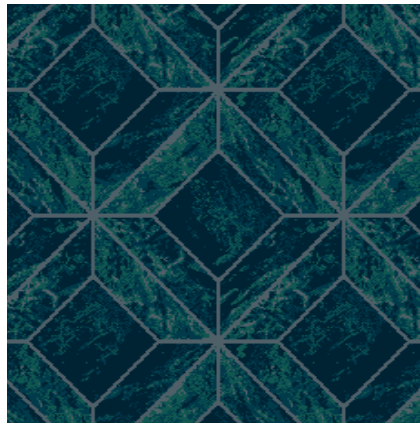
1/Q2006



2/Q2010



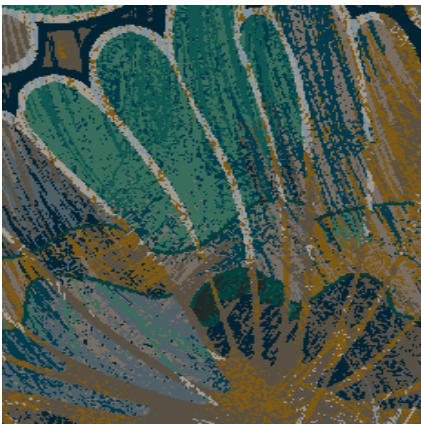
2/Q2007



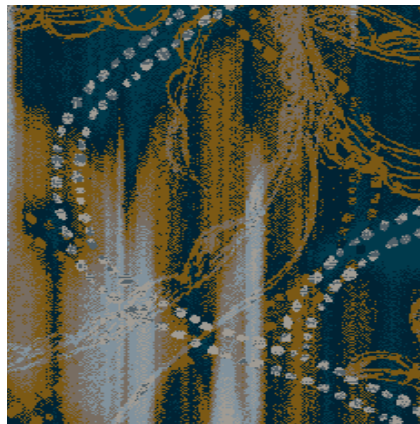
2/Q2012



2/Q2017



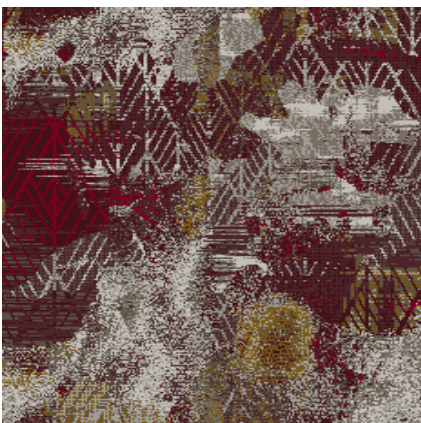
2/Q2025



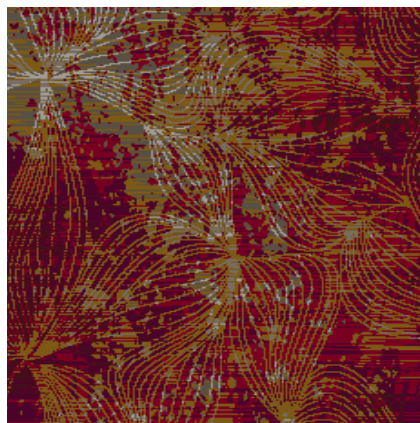
2/Q2018



1/Q2024



2/Q2020



2/Q2019



2/Q2021

Quickweave™ by Brintons is an innovative approach to carpet design, ideal for customers who require a custom made carpet with a short turnaround time.

Select a Quickweave™ design from the hundreds available and recolour using one of our Quickweave™ palettes; Revive, Unity, Naturals, Inception, Odyssey or Sequence. Choose the quality most suited to your application and once you are happy with your design, Brintons will weave your custom carpet to order and deliver within 6 weeks.

Perfectly suited to projects up to 1000m<sup>2</sup>, our award winning design team has developed a series of production ready Axminster carpets to reflect today's trends.

### Creating your QuickWeave™ Revive carpet

1. Choose your preferred design from our Quickweave™ collection - visit **[dso.brintons.net](https://dso.brintons.net)** to explore the range.
2. Pick your colour combination from within the Revive palette.
3. Choose the quality best suited to your application.
4. Order your free Quickweave™ sample.
5. Once approved Brintons will weave your custom carpet to order and deliver within 6 weeks.



For inspiration go to Brintons Design Studio Online (DSO) which provides access to thousands of digital designs. This online tool enables you to search by design category and installation type to identify a carpet design to fit your brief. Once a design has been selected the interactive software can be used to re-colour to suit a specific interior design scheme. The programme will then produce an image of the carpet in a computer-generated 3D interior. Register online and we will be in touch.

[dso.brintons.net](https://dso.brintons.net)

## Technical Specifications

|                          | QW728A                                | QW828A                                | QW928A                                    | QW1028A   | QW1128A   |
|--------------------------|---------------------------------------|---------------------------------------|---|---|---|
| <b>Construction</b>      | Woven Axminster                       | Woven Axminster                       | Woven Axminster                           | Woven Axminster                                 | Woven Axminster                                 |
| <b>Surface Structure</b> | Cut pile, single level                | Cut pile, single level                | Cut pile, single level                    | Cut pile, single level                          | Cut pile, single level                          |
| <b>Yarn Composition</b>  | 80% wool<br>20% nylon                 | 80% wool<br>20% nylon                 | 80% wool<br>20% nylon                     | 80% wool<br>20% nylon                           | 80% wool<br>20% nylon                           |
| <b>Pitch</b>             | 7 per inch                            | 7 per inch                            | 7 per inch                                | 7 per inch                                      | 7 per inch                                      |
| <b>Rows</b>              | 7 per inch                            | 8 per inch                            | 9 per inch                                | 10 per inch                                     | 11 per inch                                     |
| <b>Tuft Density</b>      | 49 per sq inch                        | 56 per sq inch                        | 63 per sq inch                            | 70 per sq inch                                  | 77 per sq inch                                  |
| <b>Pile Height</b>       | 6.6 mm                                | 7 mm                                  | 7.3 mm                                    | 7.4 mm  | 7.5 mm  |
| <b>Total Height</b>      | 9.3 mm                                | 9.7 mm                                | 10 mm                                     | 10.1 mm   | 10.2 mm   |
| <b>Pile Weight</b>       | 1023 g/m <sup>2</sup>                 | 1169 g/m <sup>2</sup>                 | 1315 g/m <sup>2</sup>                     | 1462 g/m <sup>2</sup>                           | 1608 g/m <sup>2</sup>                           |
| <b>Total Weight</b>      | 1672 g/m <sup>2</sup>                 | 1873 g/m <sup>2</sup>                 | 2075 g/m <sup>2</sup>                     | 2081 g/m <sup>2</sup>                           | 2264 g/m <sup>2</sup>                           |
| <b>Backing Material</b>  | Polyester/<br>Polypropylene/<br>Latex | Polyester/<br>Polypropylene/<br>Latex | Polyester/<br>Polypropylene/<br>Latex     | Polyester/<br>Polypropylene/<br>Latex           | Polyester/<br>Polypropylene/<br>Latex           |
| <b>Suitability</b>       | Heavy Domestic<br>Medium Contract     | Heavy Domestic<br>Heavy Contract      | Extra Heavy<br>Domestic Heavy<br>Contract | Extra Heavy<br>Domestic Extra<br>Heavy Contract | Extra Heavy<br>Domestic Extra<br>Heavy Contract |

### Flammability Classification

| Europe CE Mark | EN 13501-1<br>Class Cfl S1 | EN 13501-1<br>Class Cfl S1 | EN 13501-1<br>Class Cfl S1 | EN 13501-1<br>Class Bfl S1 | EN 13501-1<br>Class Bfl S1 |
|----------------|----------------------------|----------------------------|----------------------------|----------------------------|----------------------------|
|                |                            |                            |                            |                            |                            |



# Brintons

For further information:

+44 (0) 1562 748000

[quickweave@brintons.co.uk](mailto:quickweave@brintons.co.uk)

© Copyright Brintons Carpets Limited 2022. Brintons is a trademark of Brintons Carpets Limited. E&EO.  
All details correct at time of print. All copyright designs are and will remain the property of Brintons Carpets Limited. Any infringement of those rights will be pursued vigorously. Colours are reproduced within the limits of the printing process.